



information

basic statistics

December 00/01/02/03/04/05/06/07

**penitentiary services, rehabilitation and
juvenile justice**

six-monthly publication

January 2008

 **Generalitat de Catalunya
Departament de Justícia**

General Index

1. Evaluation and comments for 2007	3
2. Data on penitentiary and rehabilitation services	13
3. Data on alternative penal measures	33
4. Data on juvenile justice	36

Evaluation and comments for 2007

Evaluation of indicators

Six-monthly report. December 2007

0. INTRODUCTION

The growth of the population attended to by the Secretariat of Penitentiary, Rehabilitation and Juvenile Justice Services in the area of penal compliance and technical advice for minors and adults continues with the constant rate of growth observed since 2000, thus fulfilling the forecasts of the Department of Justice. This growth affects both adult inmates in prisons as well as people subject to alternative penal measures and minors under the supervision of the Directorate General for Community Law Enforcement and Juvenile Justice. On 31 December 2006 there were 14,450 people serving some type of penal sentence (open and closed centres, in the area of Juvenile Justice; ordinary centres, open centres and parole, in the penitentiary system; alternative penal measures, in the field of community law enforcement). On 31 December 2007 this figure had risen to 15,859: an increase of 9.75%. When considering all the adults and minors who, each year, have been subject to some form of law enforcement such as those mentioned above (including being on remand) as well as the minors who have been involved in a technical advisory process or mediation, the total number of subjects reaches 27,841 in 2006 and 31,108 in 2007: an increase of 10.73%.

In spite of this generalised growth in all areas of the Secretariat for Prisons, Rehabilitation and Juvenile Justice, the overall growth is mainly explained by the increase in the number of people subject to an alternative penal measure which rose from 5,208 during all 2006 to 7,194 during 2007: an increase of 38.13% of people benefiting from this type of measure.

The rate of prison inmates per 100,000 inhabitants continues to be one of the largest among countries in our environment, even though in Catalonia this rate is lower than in the rest of Spain: 149 prison inmates per 100,000 inhabitants in Spain as a whole; 130 in the case of Catalonia, 152 in the case of the rest of Spain.

As already mentioned in the report for July 2007, the Secretariat for Prisons, Rehabilitation and Juvenile Justice continues the process opening up our institution to society through multiple mechanisms of participation and a decided policy of informative transparency. Organisations such as the Taula Cívica (Civic Table), the Taula de Participació Social (Table for Social Participation), the Interdepartmental Commission for Social Acceptance, organisational changes such as those included in the Regulation for Organisation and Operation of Law Enforcement Services in Catalonia, collaboration with national and international organisations in matters related to law enforcement applied to adults as well as minors and youths, collaboration with territorial organisation and City Councils in the prevention of anti-social behaviour, the publication of this report and other similar initiatives place us in

a position of being closer and in continuous dialogue with society. Our institution is becoming much better understood by citizens in general.

The budgetary effort to provide a quality service to citizens is seen reflected by the budget increase of 18.7% in the area of penitentiary services compared to 2006 and the continued improvement of the management of this budget, including mechanisms of analytical economy. At the same time a management system using indicators, designed on the basis of an departmental and sectorial objectives plan, continuous evaluation and full immersion in new information and communication technologies, makes it possible to correct any management and deviations that could occur by providing the system with an edge-cutting tool for modernisation of the Administration. On the other hand there has also been investment in human resources and improvement of processes in the area of implementation of alternative penal measures that have enabled dealing with 38.34% more cases.

A considerable effort has also been made in the area of human resources, the foremost part of our system. There has been a significant increase in staff members with 554 new positions being filled after candidates had gone through a process of selection and highly specialised training in the Security Institute of Catalonia and the Centre for Legal Studies and Specialised Training. Significant modifications have also been made in the area of labour relations and organisational and internal communication systems that have represented increased involvement of staff to achieve organisation objectives.

The opening the new Brians 2 penitentiary centre has been satisfactory and has brought about a considerable improvement in the quality of life of all inmates and staff as it has enabled embarking upon a process for decongestion of other penal centres and enabled the application of new models of penitentiary treatment based on individual actions directly related to the criminal activity and the personal and social situation of each individual. Brians 2 already had 984 inmates on 31.12.07 and will reach its maximum capacity of 1,500 during 2008. On the other hand, the Can Lluçà EC is fully operative with 55 minors on 31.12.07 and there has also been a considerable improvement of internment in centres in the area of juvenile justice.

Action programs with adults, youths and minors aimed at their re-education and social acceptance are being applied satisfactorily, both from the point of view of the number of people who have access, as well as the technical quality of the programs and their results: productive employment, schooling, specialised intervention programs, career and occupational training, treatment of drug-dependency, unregulated training, and community work. In this report we can say that all adult inmates and minors and youths under the supervision of juvenile justice participate in at least one program for re-education and social acceptance and there has already been a first course in a new program for Digital Literacy which makes new technologies available to all interned minors, youths and adults.

In the area of juvenile justice the ratio between open / closed centres / mediation is maintained within the proposed objectives: 53% / 9% / 38%.

In the area of penitentiary services, the open system, as a more complex and integral approach to the process of re-education and social acceptance, continues being one of the most important programs of penitentiary policy in Catalonia. Even though the number of inmates in open regime has gone down from representing 27% of the total of classified convicts in 2006 to 24.6% in 2007, the number of inmates on parole has increased from 698 in December 2006 to 800 in December 2007. At the same time more and more use is being made of the type of regime described under Art. 100.2 of the Penitentiary Regulation, a system of life between semi-open and open, that enables preparation of the inmate to assume the type of life planned in the open system with more possibilities of success: during 2006 a total of 254 inmates benefited from application of Art. 100.2; and during 2007 this figure was 404.

The total number of adult inmates who benefited from leave remained stable compared to 2006. This stability is reasonable and positive when considering that the increase of foreign inmates without social and family resources, and the increase of inmates on remand considerably limits the possibility of benefiting from leave. The number of non-returns was lower than in 2006: 164 in 2006, out of 4,188 inmates who benefited from leave, and 155 in 2007, out of 4,211 benefiting from leave. In the area juvenile justice the number of non-returns, escapes and evasions has been significantly lower in 2007 in comparison to previous years.

The climate social in juvenile justice prisons and educational centres continues along the same lines as explained in the July 2007 report: it is, in general, satisfactory without the level and type of incidents exceeding reasonable limits within the characteristics of closed institutions.

1. PENITENTIARY AREA

1.1 POPULATION

The rate of prison inmates in Spain per 100,000 inhabitants continues being the largest of the countries in our environment and increases year after year: 149 prison inmates per 100,000 inhabitants, above that of England and Wales (148). In Catalonia the ratio of prison inmates, although above that of countries such as Portugal, Germany or France, has dropped in relation to June 2007 because of the increase in the general population and seasonal maintenance of the number of inmates in Catalonia, In December 2007 there were 130 prison inmates per 100,000 inhabitants, below the rate for the rest of Spain which was 152 inmates per 100,000 inhabitants. These calculations are based on the number of inmates in all of Spain and in Catalonia in December 2007 compared to the census data approved by Royal Decree 1683/2007, dated 14 December 2007 (graphs 1.1 and 1.2).

Even though the penitentiary population stabilised from June 2007 to December, this stabilisation must be considered as seasonal and presenting the same behaviour as in previous measurements. The growth since 2000 has been constant, and this growth is mainly observed in the first six-month periods of each year. In reality 2007 presented a growth of 4.74% compared to 2006, with a net increase of 425 inmates (graph 1.3). This growth is within Department of Justice forecasts which for December 2008 expect the number of inmates to be 10,000 provided current penal, social and demographic variables are maintained.

As for the process related characteristics of the population, there is an outstanding increase of inmates on remand. On 31 December 23% of the population was on remand; this was 21.4% in December 2006 and is one of the highest since 1990 (graph 1.5). This process related situation mainly affects young inmates between 18 and 21 years of which 42% are on remand, foreigners, with 36% on remand, and women, with 26% on remand. The situation of "on remand", apart from other sociological, legal and penal considerations, is an added difficulty for processes of social acceptance and re-education related to the application of the open system.

The distribution of the population by sexes shows that women have gone from 608 in December 2006 to 694 in December 2007. This increase is in line with the general increase of the prison population. In terms of percentages, the number of women increased slightly in comparison with the whole prison population: they represented 6.8% in December 2006 and in December 2007 this was 7.4%, although remaining stable at about 7% (graph 1.7).

By ages, young inmates aged from 18 to 21 years show a downward tendency in percentage terms from 2003 until now. In December 2006 there were 391 youths imprisoned, 4.4% of the total prison population; in December 2007 the figure was 396 youths, 4.2% of the total number of prisoners (graph 1.8).

When considering social and demographic variables for nationality, the number of foreigners is increasing constantly year after year. They now represent more than 54% of all people entering prison and at the moment there are 3,773, 40.2% of the total prison population (graph 1.10). Of this total, 16% are European community foreigners.

1.2. PENITENTIARY TREATMENT

Closed regime

The closed regime (first degree or Art. 10 LOGP) is the most restrictive form of prison life all those considered in penitentiary legislation and is applied, temporarily and until the causes are resolved, to inmates who show clear non-

adaptation to ordinary life and normal coexistence in penal centres. The number of inmates in closed regime, together with other variables such as the number of incidents or disciplinary actions, is a good measure of the social climate in prisons. In December 2006 there were 179 inmates in closed regime, compared to 192 on the same date in 2007. In spite of this increase in absolute terms, in relative terms it remains stable: 2% of the total population (graph 1.16). The closed regime is applied to youths and women as well as people over 21. In the case of women there is a slight increase in relation to 2006: 12 women in closed regime in December 2006; 18 in December 2007, but this increase has no statistical significance and neither does it indicate a worsening of the social climate in the case of women inmates as it is within the percentage considered reasonable, although work must be done to reduce this ratio (graph 1.17).

Open regime

In the case of the open system, the percentage of convicts classified in this prison regime continues to fall, although the indicator remains high in both absolute and relative figures indicating the open system as a clearly differential tool of our penitentiary system, which make a decided commitment to bringing inmates closer, with all due professional support and follow-up, to a normal environment as the best way of promoting processes for re-acceptance, while guaranteeing the appropriateness of the measure and completion of the penal sentence. In December 2006 there were 1,721 inmates in the open system, 27% of the total number of classified convicts; in December 2007 this figure was 1,613, 24.6% of the total number of classified convicts (graph 1.11). This drop is compensated by an increase of the number of inmates on parole, 698 in December 2006 compared to 800 in December 2007 (graph 1.21) and an increase in the number of inmates that have passed through an intermediate situation (Art. 100.2 of the Penitentiary Regulation) as preparation for the open system: 254 inmates under Art. 100.2 during 2006; 404 during 2007 (graph 1.15). This percentage of open system inmates compared to classified convicts is especially high in the case of women, 37.7% on the total number of classified female convicts (graph. 1.12), and lower in the case of youths, 16.4% of the total number of classified young convicts (graph 1.13).

Leaves

The total number of inmates benefiting from ordinary (in semi-open or open systems or weekend leave) or extraordinary leave during 2007 was 4,211, a figure slightly above that for 2006, 4,188 (graph 1.26). In the majority of cases leave is a step prior to the open system and this is why this increase must be considered as simplifying the task of rehabilitation. In spite of the considerable increase of inmates on remand and the population of foreigners without roots or sufficient social associations in Catalonia, leaves are consolidated as a system favouring re-acceptance.

Scheduled leave

Scheduled leave, where the inmate is allowed out with company into the normal environment, are another of the basic tools in the process of penitentiary treatment. After a very significant increase during 2004, after this date scheduled leave has decreased year after year. In 2006 a total of 1,037 inmates obtained this type of leave; this figure was 971 inmates in 2007 (graph 1.25). One of the lowest figures since 2000. This decrease is partially due to an increase of leaves for less than 48 hours, but this figure must be revised in depth to understand its importance as providing support to the project of social acceptance of each individual.

Productive employment

Productive employment managed by the CIRE (Centre for Re-acceptance Initiatives), which inmates participate in both inside and outside penal centres, continued its growth and consolidated its importance as an important tool for re-insertion. Furthermore, during 2007 the CIRE considerably increased the offer of employment opening up a range of jobs aimed at the usual maintenance of penal centres (laundries, kitchens, maintenance), as well as maintaining high standards in productive workshops, outside services and occupational plans. More and more companies confide part of their production to CIRE and more public and private organisations offer new employment and training possibilities. During 2006 there was a mean of 1,994 inmates in productive employment. This mean increased to 2,332 during 2007, that is, an increase of 16.95% whereas the inmate population only increased by 4.74% (graph 1.23).

Specialised Programs

Specialised programs called SAC (Control of Sexual Aggression) DEVi (Violent offences) and VIDO (domestic violence) are applied to all inmates who meet the conditions to participate (approaching the period of freedom and willingness on the part of the inmate) and cover prison needs in this regard. In the last six months of 2007, 280 inmates were undertaking the SAC program, 255 the DEVi program and 392 the VIDO program (graph 1.24). The efficiency of the SAC program has been demonstrated and at the moment the efficiency of the VIDO and DEVI programs is being evaluated.

Schooling

The number of enrolments in penal centre schools was 3,421 in December 2006. This figure has increased to 3,839 in December 2007 (graph 1.22). The increase has been 12.22% whereas the increase of the prison population has only been 4.74%. This indicator is yet another showing how penitentiary intervention in re-education is operating correctly.

1.3. DEATHS AND INCIDENTS

During 2007 there were a total of 66 deaths, 15 more than during 2006. Of these deaths, 29 occurred in the centre (15 during 2006). Of the total deaths, 8 occurred for overdose and there were 9 suicides (table 1.33). The action protocols are being reviewed to reinforce follow-up of inmates with a risk of suicide as well as to improve observation systems and control of drug entry. At the same time an exhaustive review will be made of healthcare systems for detection and Hospital referral of inmates with a risk of death because of incurable disease with a fatal prognosis.

There were 2 escapes: 1 from the productive workshops outside the Ponent CP and another during police transfer to Tarragona (graph 1.29).

The number of non-returns from ordinary, extraordinary and weekend leave have been below those for 2006: 164 non-returns in 2006 (3.9% of the total number of inmates benefiting from them), of which 50.6% were recuperated; 155 non-returns in 2007 (3.7% of the total number of inmates benefiting from them), of which 45.8% were recuperated (graph 1.28). These data show that leaves are granted with sufficient guarantees in accordance with the purpose of the sentences.

The number of non-returns from scheduled leave has dropped: 8 in 2006 and 6 in 2007, of which 50% have returned (graph 1.27). Even though this decrease does not necessarily imply an improvement of the systems for control or selection of the inmates, reducing the number of inmates on leave means that it should also be possible to reduce the non-returns. However non-returns only represent 0.6% of the total number of inmates who benefit from leave, a figure within the parameters of normality.

The indicators related to assaults on guards by inmates, assaults between inmates and self-inflicted injury of inmates, all increased slightly compared to 2006: 46 assaults on prison guards (32 in 2006), of which 6 were considered serious (0 serious assaults in 2006); 555 assaults between inmates (429 in 2006), of which 30 were considered serious (25 in 2006); 98 self-inflicted injury of inmates (82 in 2006), of which 10 were considered serious (7 in 2006) (graphs 1.30, 1.31 and 1.32). These figures are below the figures for 2004 and previous years in absolute terms, and more so when considering that the prison population has increased very significantly. Although they are within normal limits in our area, and, together with other variables, do not indicate any deterioration of the social climate, they are sensitive variables which must be given special attention during 2008 so that they do not become a factor of destabilisation of the system of coexistence, either as a cause or a consequence of any type of deterioration.

2. AREA OF ALTERNATIVE PENAL MEASURES

Alternative penal measures continue increasing like in previous years. The majority of APM are comprised of sentences for offences against collective safety (traffic), and have increased from 19.25% of the total number of offences with a APM sentence in 2003 to 40.85% in 2007, and the sentences for injuries have increased from 16.58% of the total number of offences with APM sentence in 2003 to 32.59% during 2007. The increase of APM is mainly due to new penal types. Possession related offences are still basically prison sentences and very few benefit from of this type of alternative sentence: in 2003, 490 people served an APM sentence for an offence against property; in 2007 there were 771 people. In prisons, 3,700 inmates (almost 40% of all) serve a sentence for possession related offences. In 2003, 216 people served a sentence alternative to prison for offences against collective safety; in 2007, 2,939 people were serving an alternative sentence for this type of offence.

During 2006 there were 5,019 legal actions for serving an alternative penal measure; in 2007 the number of legal actions was 5,412, 7.83% more than in 2006 (graph 2.1).

Furthermore, during 2006 a total of 5,994 measures had been or were being enforced. During 2007 this figure was 8,292, an increase of 38.34%. During 2006 a total of 5,208 people had served or were serving an alternative penal measure; the number of people in this situation in 2007 was 7,194, an increase of 38.13% (graph 2.2).

The Department has made a considerable effort to provide a response to legal actions for serving an APM and the waiting lists have gone down from 35.3% in 2006 to 33.53% in 2007 (graph 2.3) and it has been possible to attend to 2,298 more cases than in 2006 (graph 2.2).

The measures called "community duties and work" represent 86.6% of the total number of APM. Of these, 44.5% are community work. APM with deprivation of freedom (internment in a psychiatric centre, internment in a disintoxication centre and internment in an special education centre) represent 5.84% of the total number of APM (table 2.4).

3. AREA OF JUVENILE JUSTICE

The population in Juvenile Justice continues growing. During 2007 it attended to a total of 7,654 minors and youths, a growth of 3.95% compared to 2006 (graph 3.1).

Of all the programs and measures implemented or in implementation during 2007, 38% correspond to mediation (34% in 2006), 53% to open system (56% in 2006) and 9% to internment in centres (10% in 2006). Mediation is gaining ground and the measure of internment is being applied less and less in comparison with the total number of measures imposed (graph 3.6). In fact, in absolute terms, internment in centres has stabilised. During 2006 a total of 590 offenders passed through internment centres and during 2007 there were 593 (graph 3.9).

In regard to mediation it is also necessary to point out that it has not only increased in relative and absolute terms compared to 2006 as an alternative program to the open system or internment, but its efficiency has also increased. In 2006, 82.96% of mediations in the area of justice for minors ended up with a result positive. In 2007, this percentage increased to 85.66% (graph 3.7).

Both static and dynamic security measures in centres for minors continue improving. The number of non-returns have been reduced and gone from 84 in 2006 to 63 in 2007, of which 84.13% have been detained once again (graph 3.10). The same occurred with escapes. In 2006 there were 62 and in 2007 this figure dropped to 45, of which 84.44% have been detained once again (graph 3.11).

A total of 267 interned minors were enrolled in School programs, 100% of all minors interned (graph 3.12).

An effort has been made to extend career and occupational training to a larger number of interned minors. This effort has made it possible for 96.05% of minors interned in centres to carry out some type of career and occupational training activity compared to 71.08% in 2006 (graph 3.13).

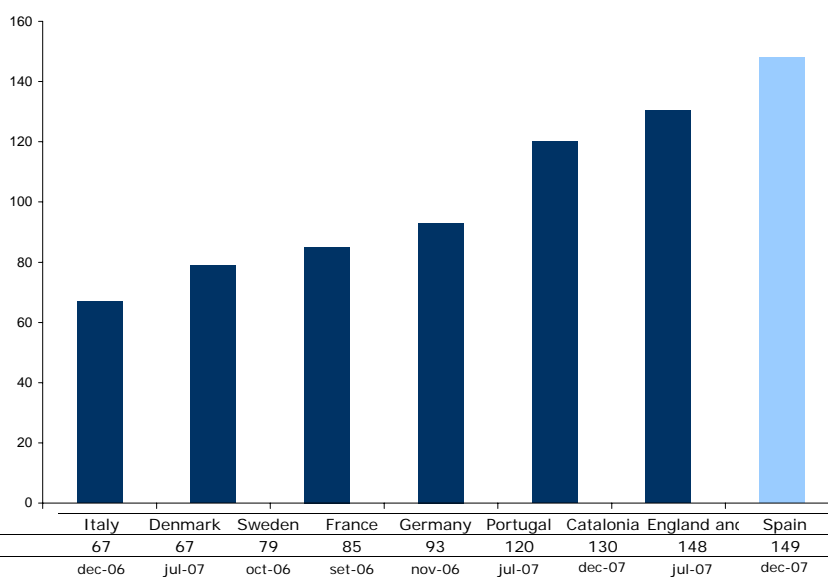
penitentiary and rehabilitation services

basic data

December

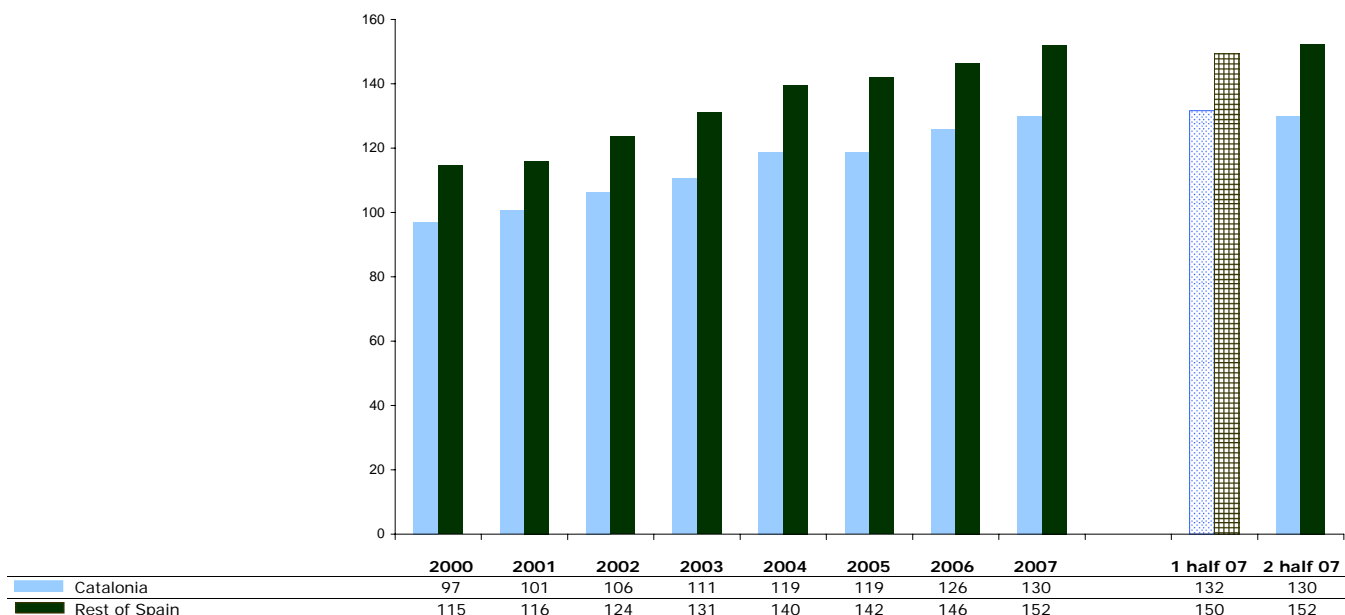
00/01/02/03/04/05/06/07

1.1 Prison inmates per 100 thousand inhab. Comparison to Spain and other European countries 2006/07.



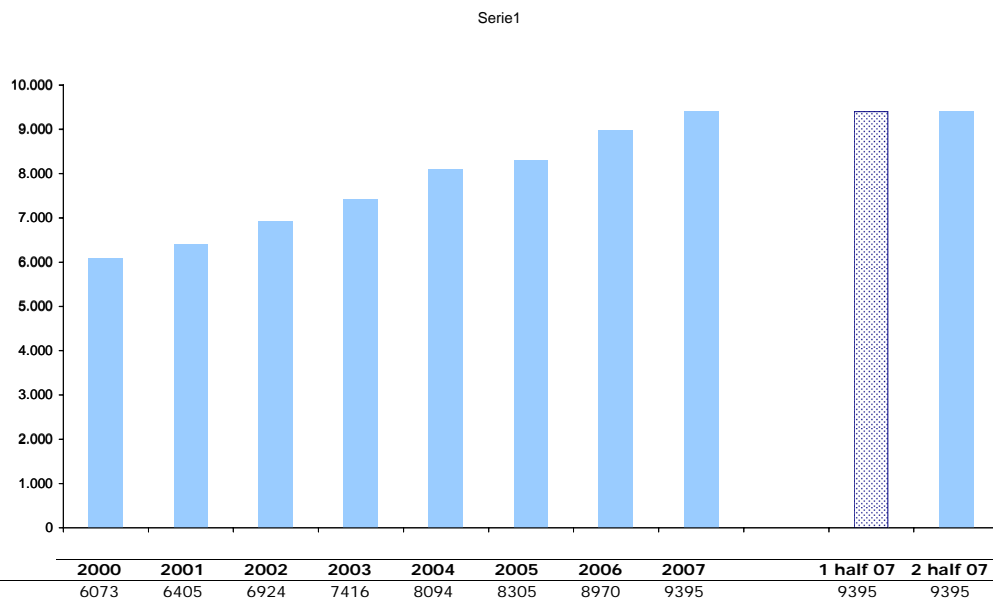
Data extracted from University of London web page (<http://www.kcl.ac.uk/>). The data for Spain includes all prison inmates in the country and on 21 December 2007 and were extracted from the information published on the Home Office web page (www.mir.es). The data for Catalonia refer to the inmate population on the last day of December and were obtained from the Department of Justice. The data of the other countries correspond to the dates indicated below the value. The population data for Catalonia and Spain are from the latest census referred to 1 January 2007 and approved by Royal Decree 1683/2007, dated 14 December 2007.

1.2 Annual growth of the inmate population per 100 thousand inhabitants



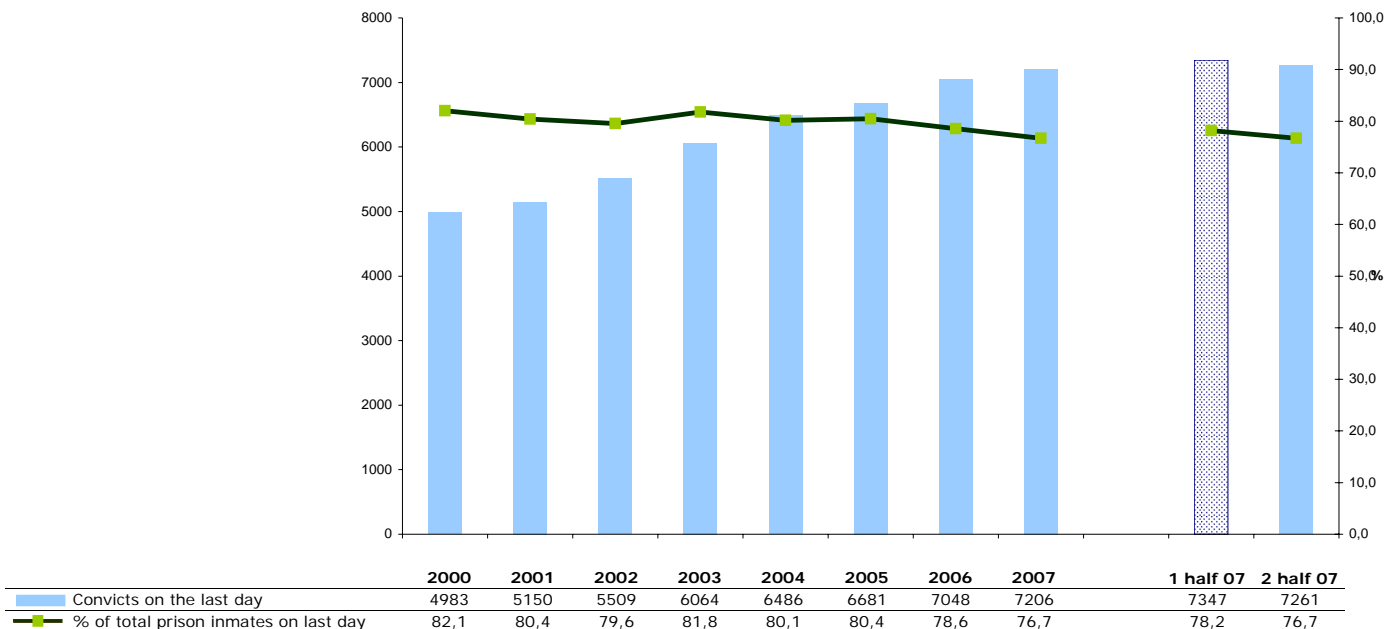
Comparison of the prison inmate population per 100,000 inhabitants in Catalonia and the rest of Spain. The data on prison inmates in Catalonia refer to the last day of each year or six-month period. The data on the prison inmate population for the rest of Spain were extracted from information published on the Home Office web page (www.mir.es). The population data were extracted from the INE (Employment Service) web page and are the latest official data from the census referred to 1 January 2007 and approved by Royal Decree 1683/2007, dated 14 December 2007.

1.3 Total inmate population



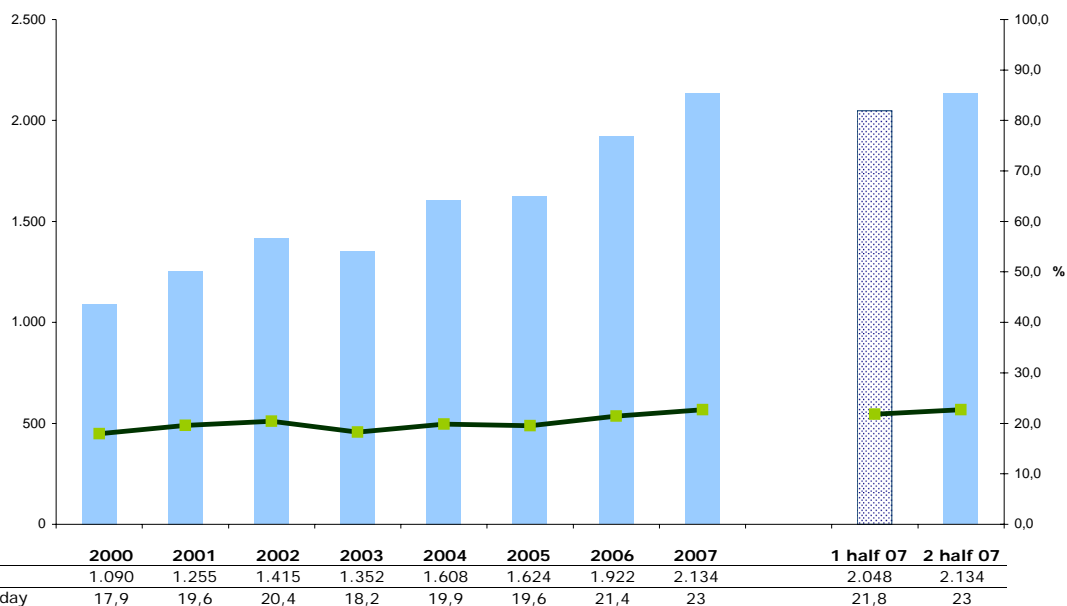
This refers to the total number of inmates in penitentiary centres at midnight on the last day of each year.

1.4 Convicts



The number of convicted inmates on the last day of each year and the percentage this represents on the total number of inmates at that time. This concept includes convicted inmates still held on remand (about 2-3% of the total) and legal detainees (0.6% of inmates).

1.5 On remand



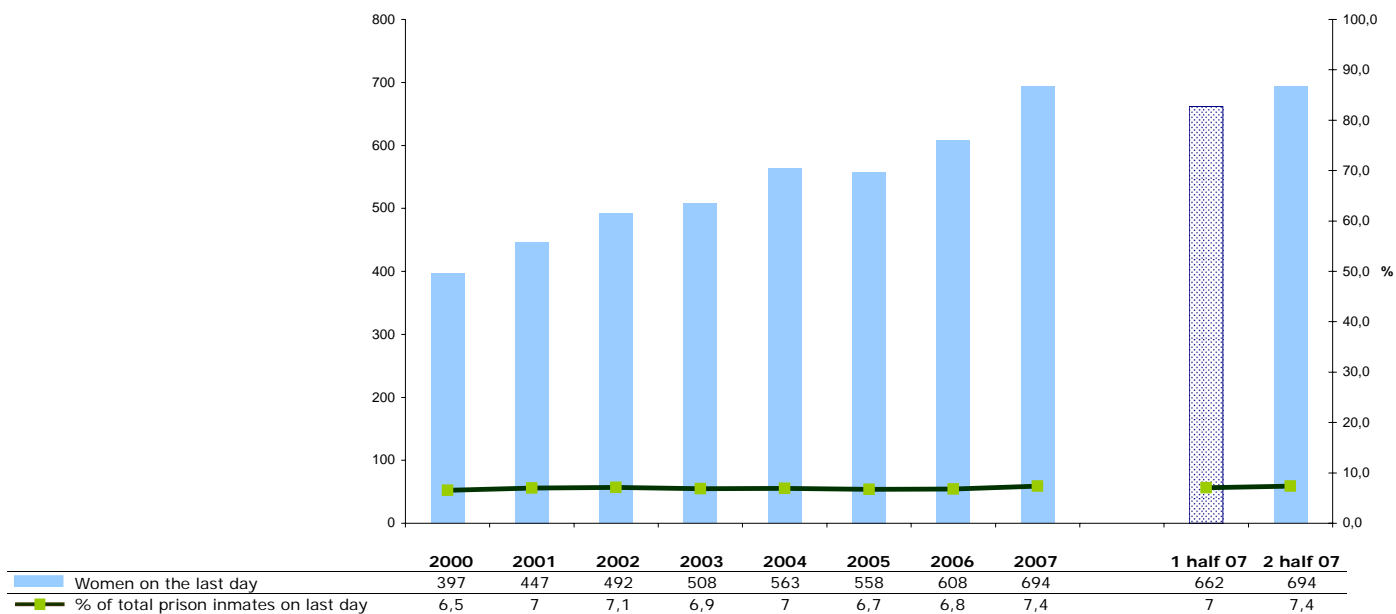
Inmate population on remand on the last day. Percentage they represent on the total inmate population.

1.6 Men



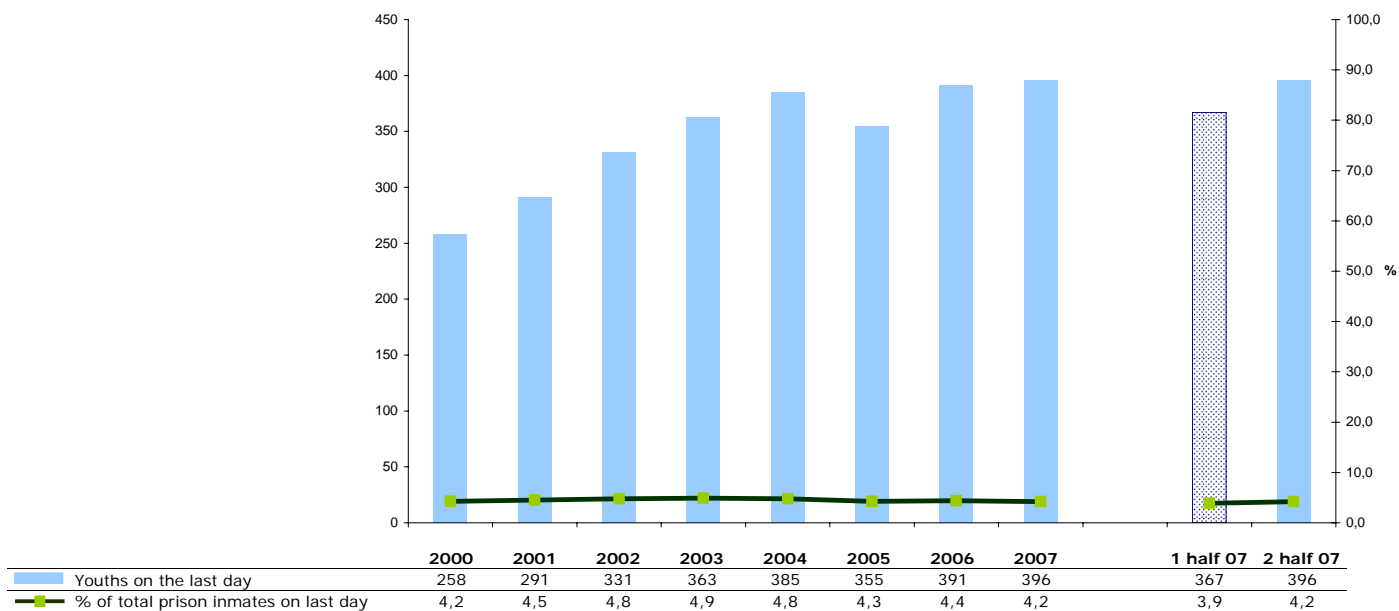
Men on the last day. Percentage they represent on the total inmate population.

1.7 Women



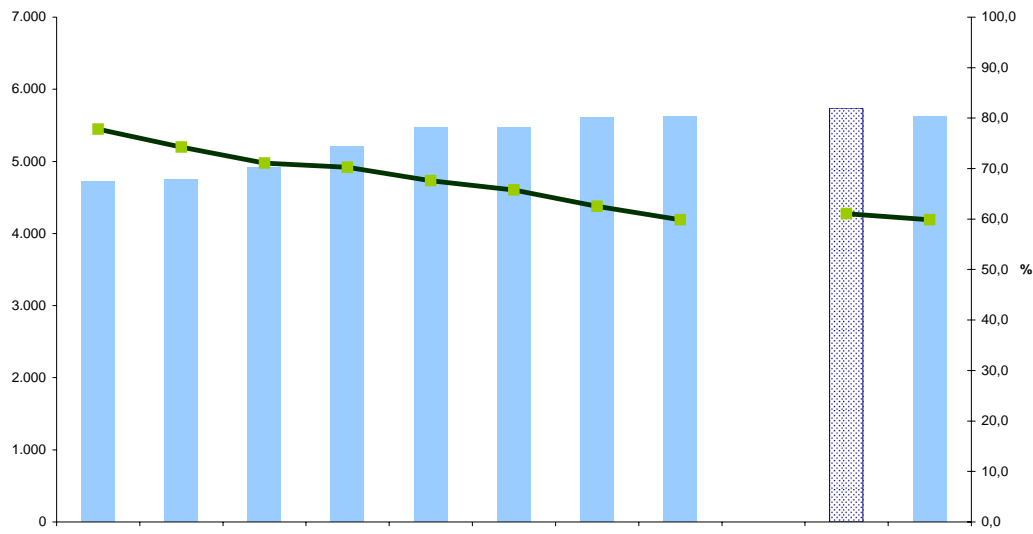
Women on the last day. Percentage they represent on the total inmate population.

1.8 Youths



Youths on the last day . Percentage they represent on the total inmate population. Youths are understood to be inmates under 21 years of age.

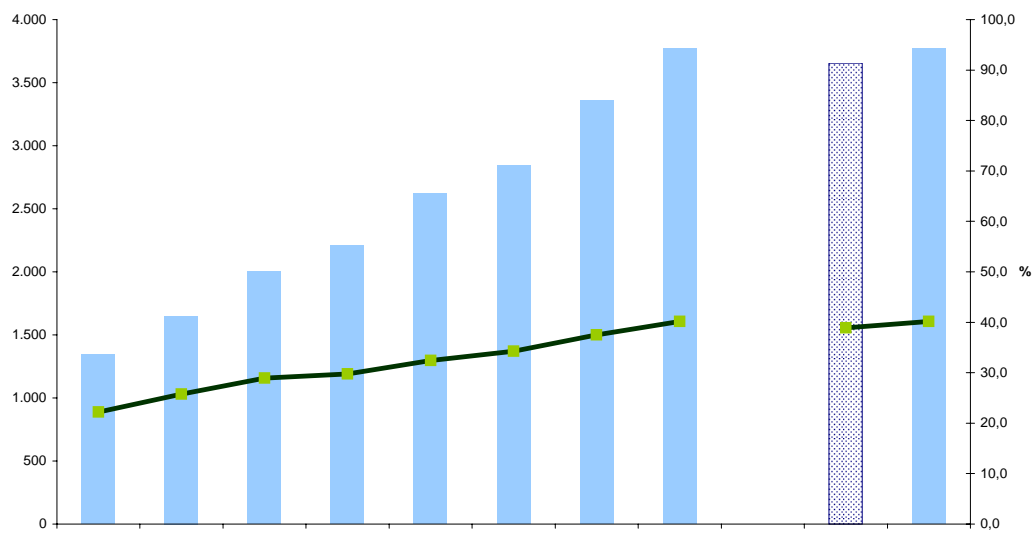
1.9 Spanish nationals



	2000	2001	2002	2003	2004	2005	2006	2007	1 half 07	2 half 07
Spanish nationals on the last day	4.725	4.755	4.922	5.209	5.469	5.462	5.609	5.622	5.739	5.622
% of total prison inmates on last day	77,8	74,2	71,1	70,2	67,6	65,8	62,5	59,8	61,1	59,8

Spanish nationals on the last day. Percentage they represent on the total inmate population.

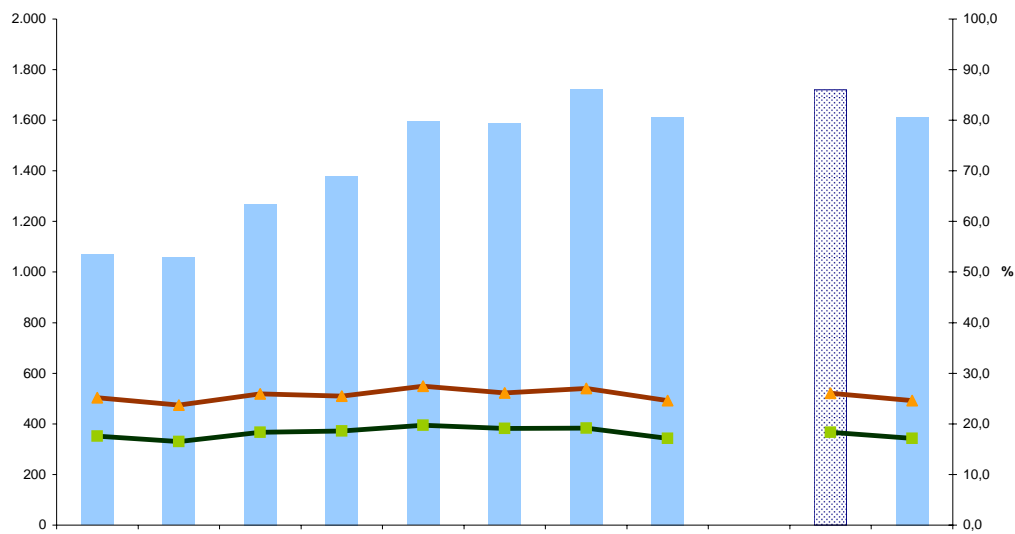
1.10 Foreigners



	2000	2001	2002	2003	2004	2005	2006	2007	1 half 07	2 half 07
Foreigners on the last day	1.348	1.650	2.002	2.207	2.625	2.843	3.361	3.773	3.656	3.773
% of total prison inmates on last day	22,2	25,8	28,9	29,8	32,4	34,2	37,5	40,2	38,9	40,2

Foreigners on the last day. Percentage they represent on the total inmate population.

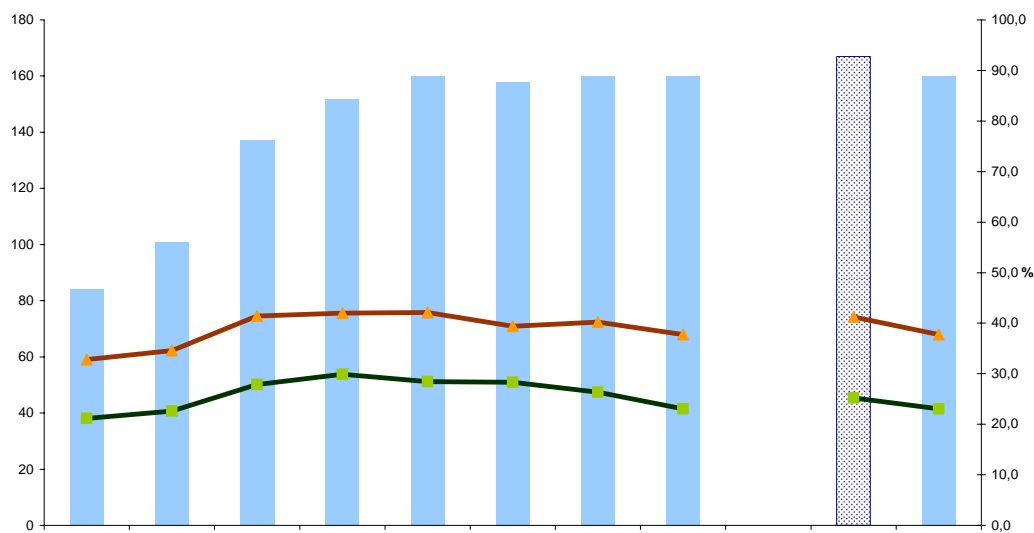
1.11 Inmates in open regime



	2000	2001	2002	2003	2004	2005	2006	2007	1 half 07	2 half 07
Inmates in open regime on last day	1.069	1.058	1.269	1.380	1.596	1.588	1.721	1.613	1.721	1.613
% of total prison inmates	17,6	16,5	18,3	18,6	19,7	19,1	19,2	17,2	18,3	17,2
% of total classified	25,2	23,7	25,9	25,5	27,5	26,1	27	24,6	26,1	24,6

The number of inmates in open regime, of all types, on the last day of each year. The graph also shows the percentage this number represents as the total inmates and the percentage of the number of convicted inmates classified. These two percentages must be analysed together. Not all inmates are classified. The classification in prison regimes only affects convicted inmates, not those on remand. On the other hand, not all convicted inmates are classified: the classification of a convict not only requires a firm sentence, but also the proposal of the treatment teams in penal centres. This proposal must be presented within a maximum period of two months following reception of the firm sentence.

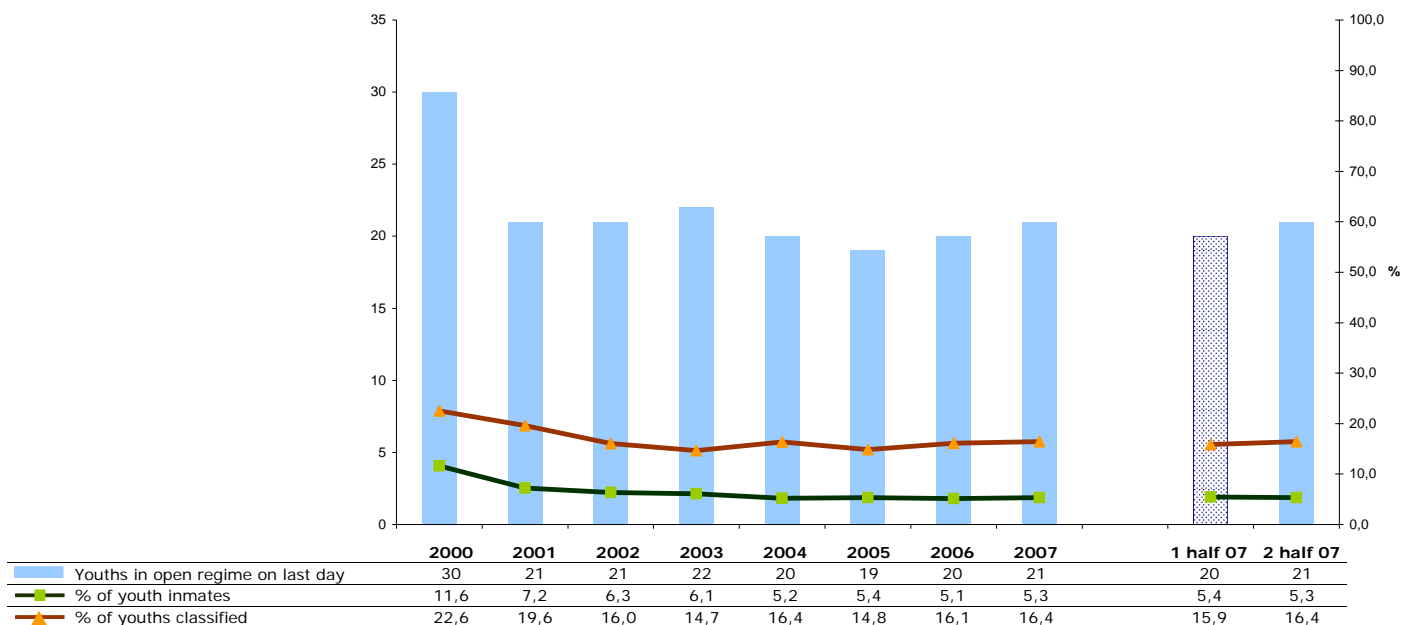
1.12 Women in regime



	2000	2001	2002	2003	2004	2005	2006	2007	1 half 07	2 half 07
Female inmates in open regime on last day	84	101	137	152	160	158	160	160	167	160
% of women inmates	21,2	22,6	27,8	29,9	28,4	28,3	26,3	23,1	25,2	23,1
% of women classified	32,8	34,6	41,4	42	42,1	39,4	40,2	37,7	41,2	37,7

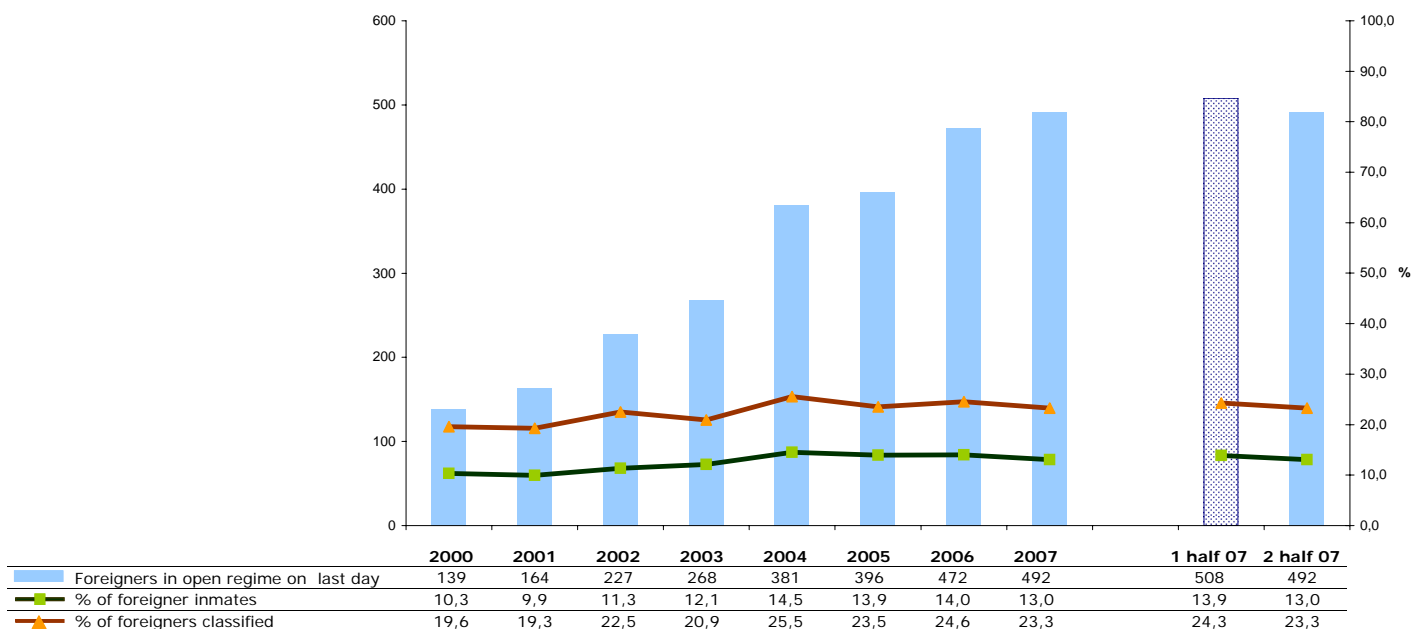
Women in open regime. Percentage of women inmates and classified women.

1.13 Youths in regime



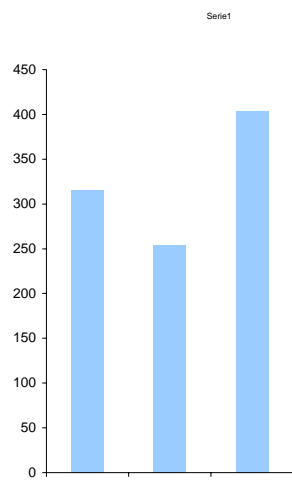
Youths inmates in open regime on the last day. Percentage of youth inmates and classified youths.

1.14 Foreigners in open regime



Foreigners in open regime. Percentage of foreigner prison inmates and foreigners classified.

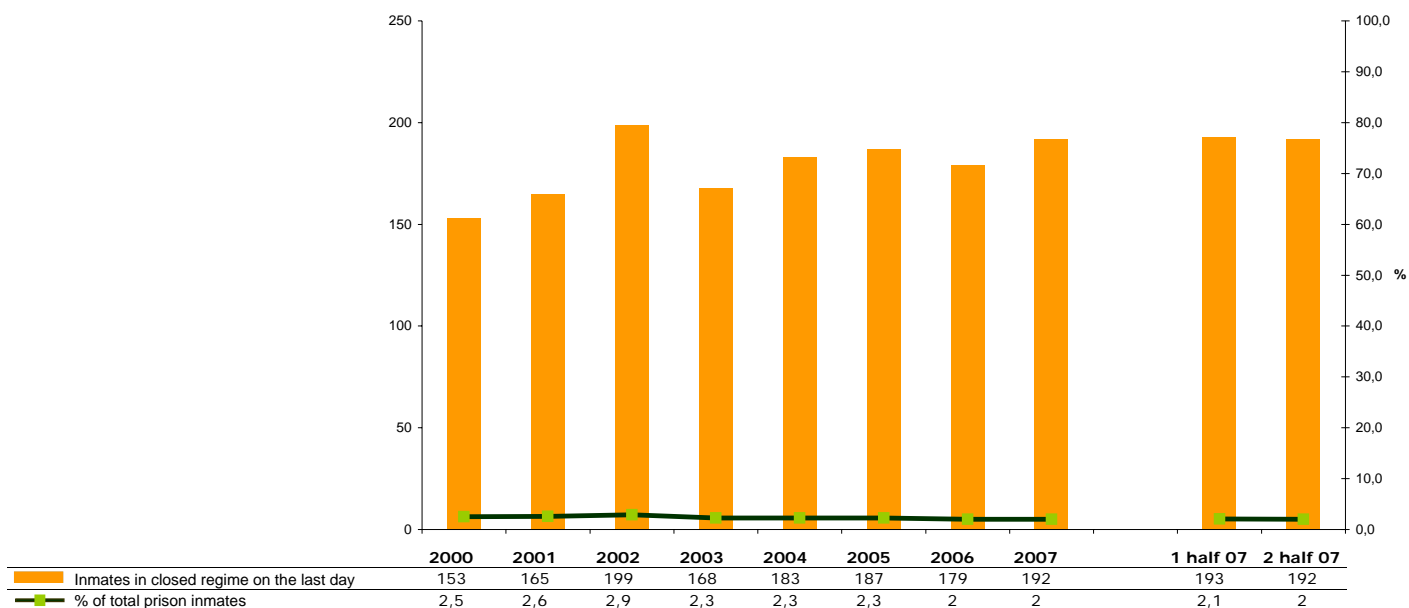
1.15 Inmates accumulated under Article 100.2



	2005	2006	2007
Inmates accumulated under Article 10	316	254	404

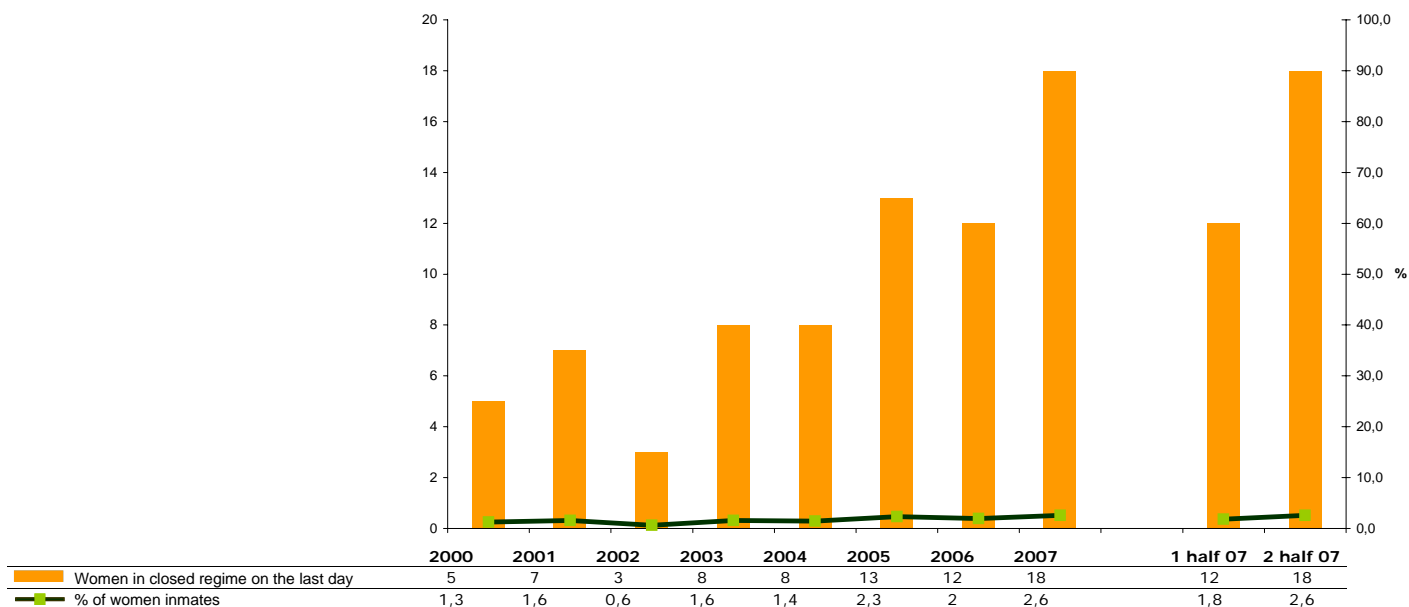
Article 100.2 introduced the principle of flexibility to the classification of degrees of treatment. This figure enables combining aspects of different degrees of treatment, based on the specific treatment program. The graph shows the annual accumulated number of inmates who were given an Article 100.2 mode of life which combines aspects of semi-open with aspects of the open system such as the possibility of going to work outside of the penal centre even though they are classified as under semi-open regime.

1.16 Inmates in closed regime



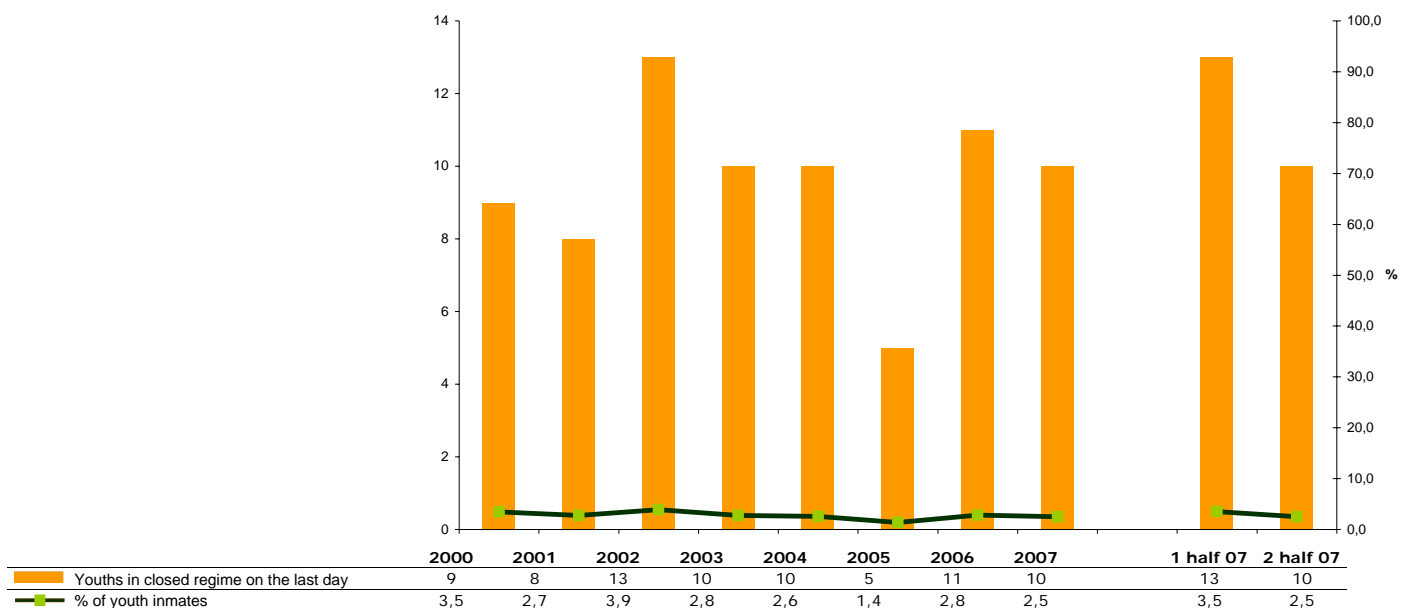
Inmates in closed regime on the last day of the year. Including convicts classified as in closed regime and those on remand in Article 10. The latter represent approximately 20% of inmates in closed regime. The graph also includes the percentage of inmates in closed regime compared to the total number of prison inmates.

1.17 Women in closed regime



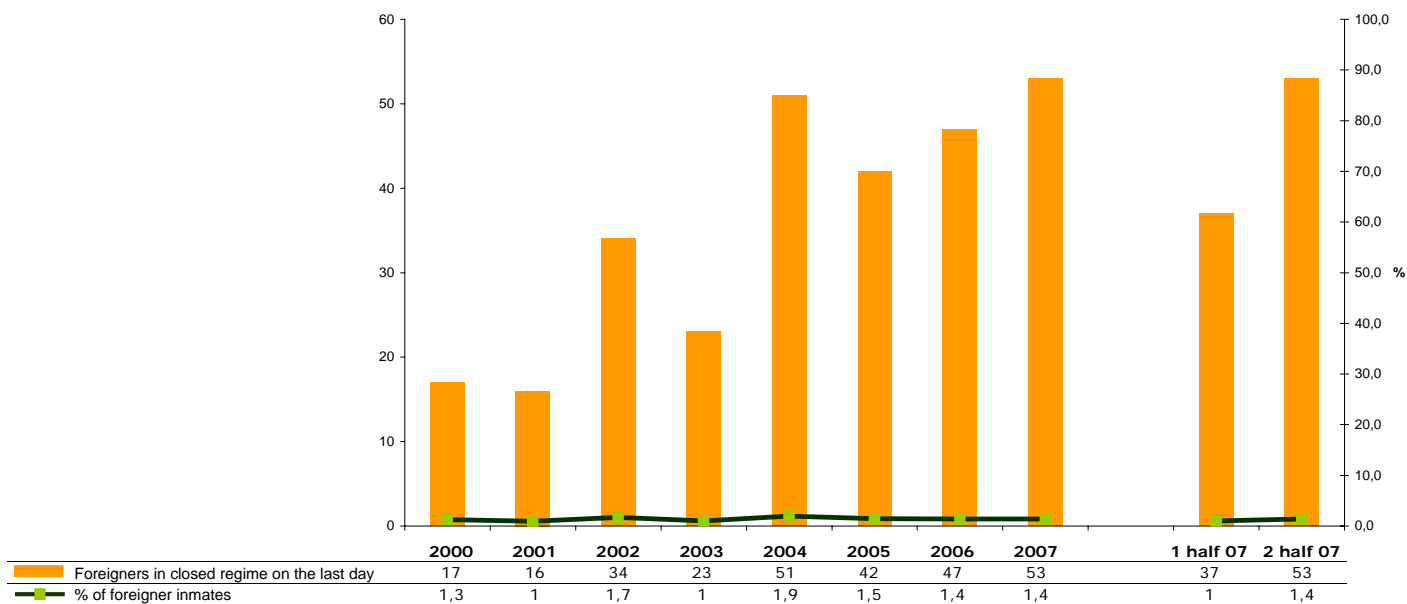
Women in closed regime on the last day. Percentage on total women inmates.

1.18 Youths in closed regime



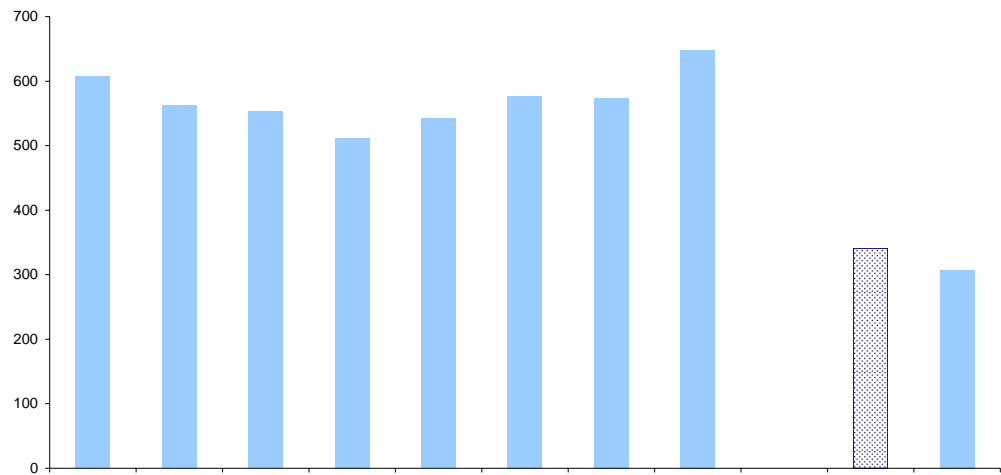
Youths in closed regime on the last day. Percentage of youth prison inmates.

1.19 Foreigners in closed regime



Foreigners in closed regime on the last day. Percentage of foreign prison inmates.

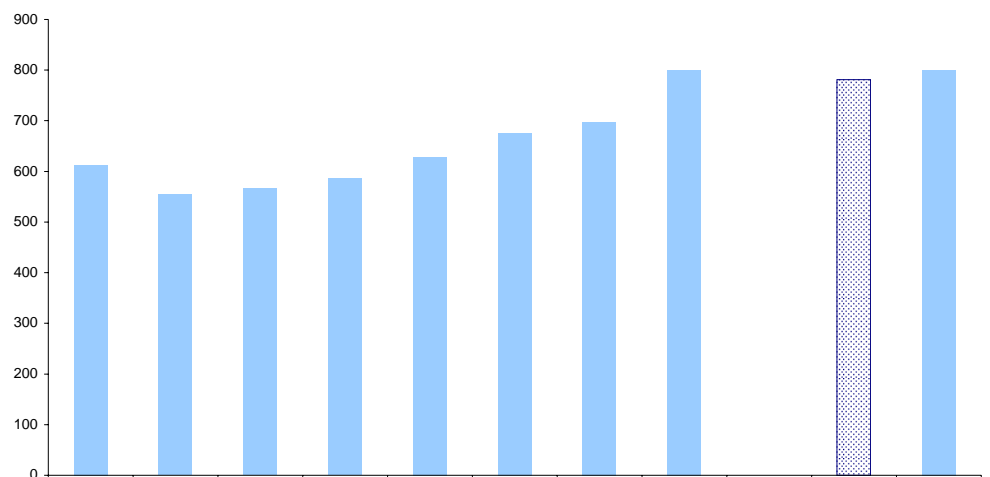
1.20 Evolution of the paroles granted



	2000	2001	2002	2003	2004	2005	2006	2007	1 half 07	2 half 07
Paroles granted each year	607	562	553	512	542	577	574	648	341	307

This section refers to the number of paroles accumulated during the year as proposed and granted by the JVP (Parole Court). Not all application for parole are necessarily approved.

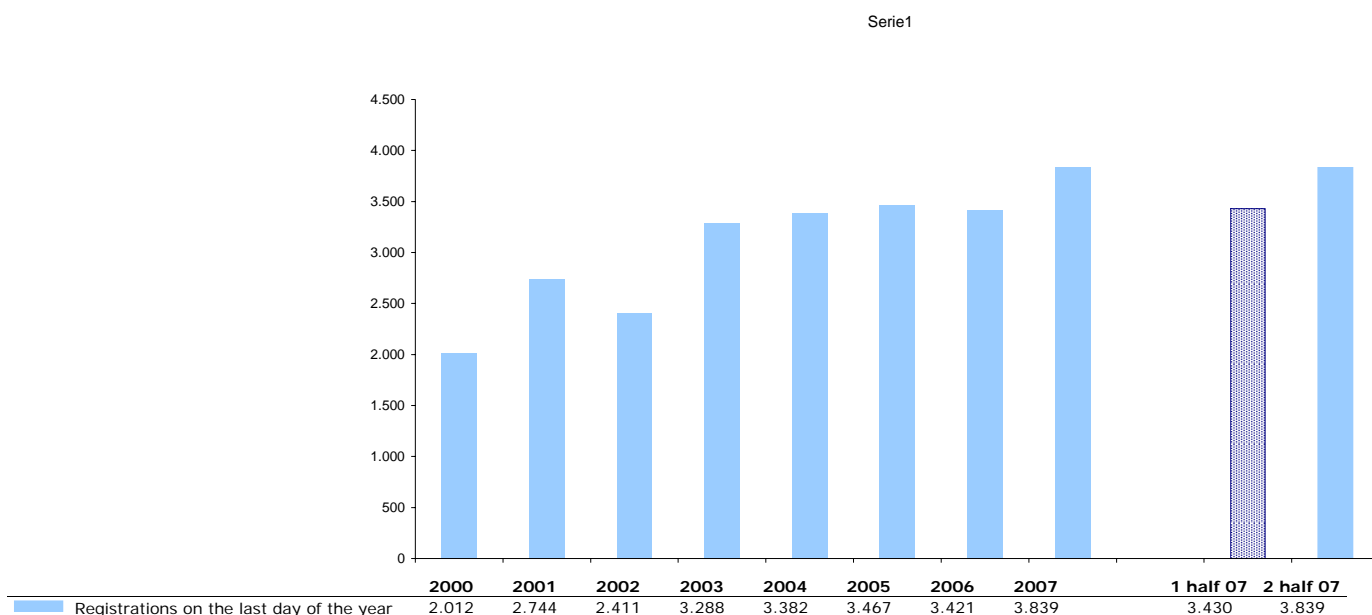
1.21 Annual evolution of inmates on parole



	2000	2001	2002	2003	2004	2005	2006	2007	1 half 07	2 half 07
Paroles on the last day of the year	613	554	566	586	629	676	698	800	781	800

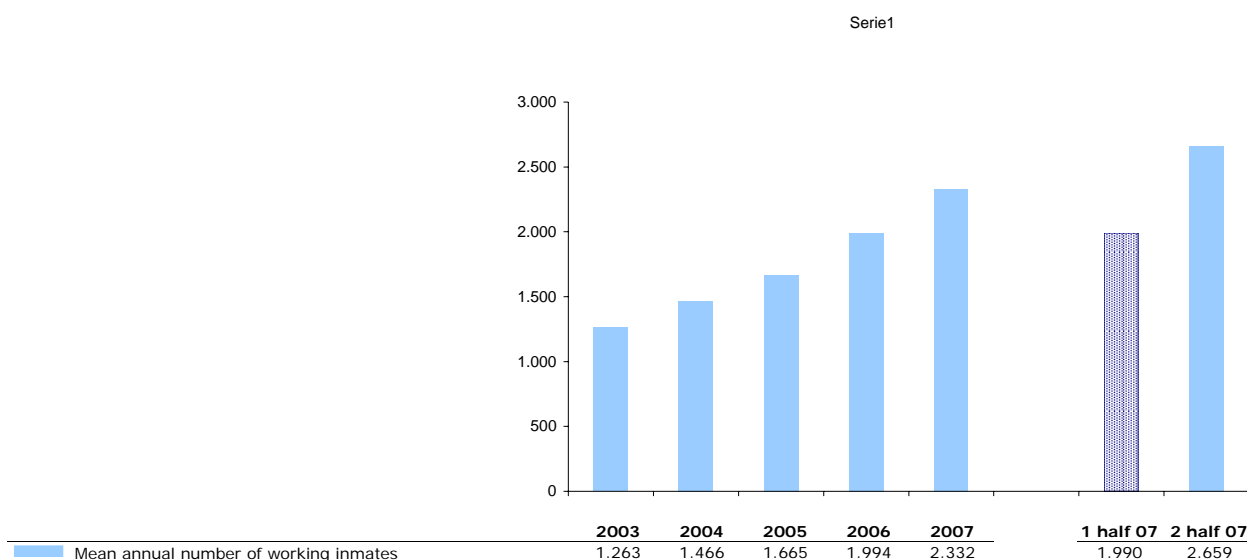
Data on the number of inmates completing the last part of their sentence on parole under the supervision and control of specialised teams on the last day of each year.

1.22 Prison population registered for educational courses



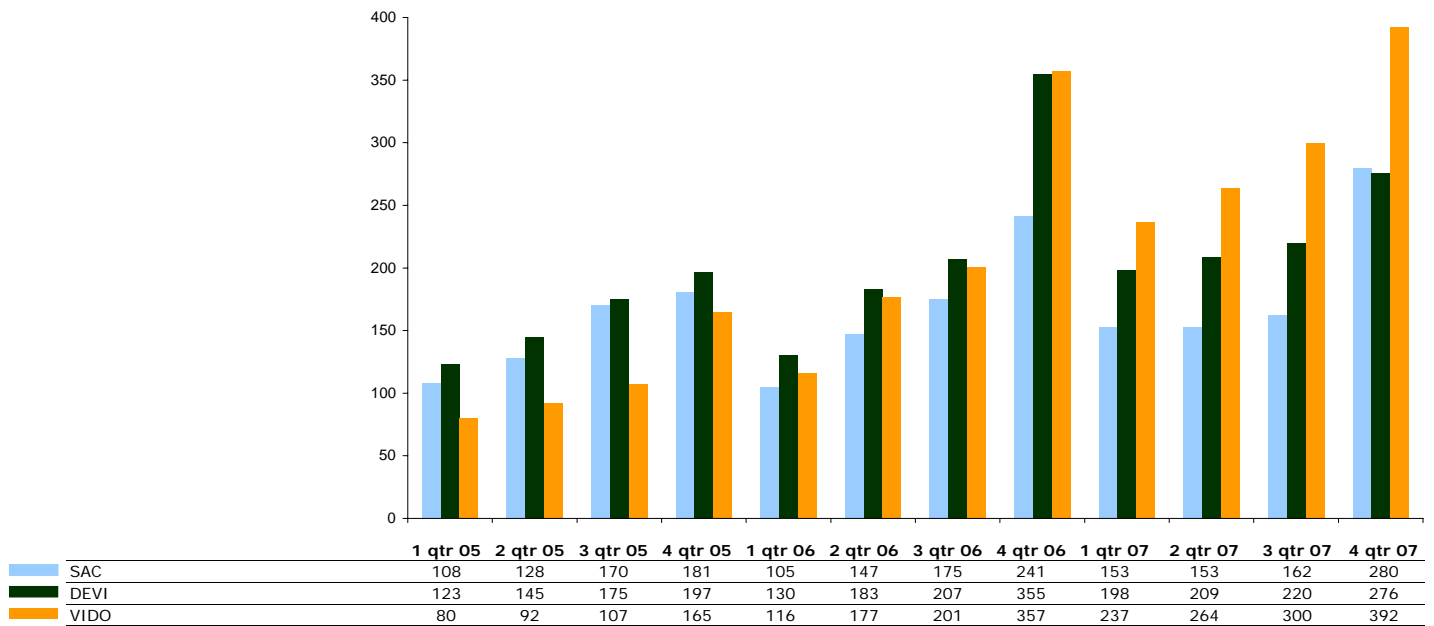
Registrations for school and adult educational courses during the last month of the academic year. The courses include instrumental training (primary education), secondary education, college, professional training, university studies (including pre-access and access), Spanish for foreigners, Catalan, training modules and information technology. As of January 2006 it will also include registration for courses in foreign languages and additional studies (unitary school, additional school classes and correspondence courses. The inmates available are all prison inmates except those the classified under Art. 82 and Art. 83 and less 5% corresponding to inmates who are not eligible for registration (in transit, on remand with less than one month stay in the prison).

1.23 Prison population in work programs



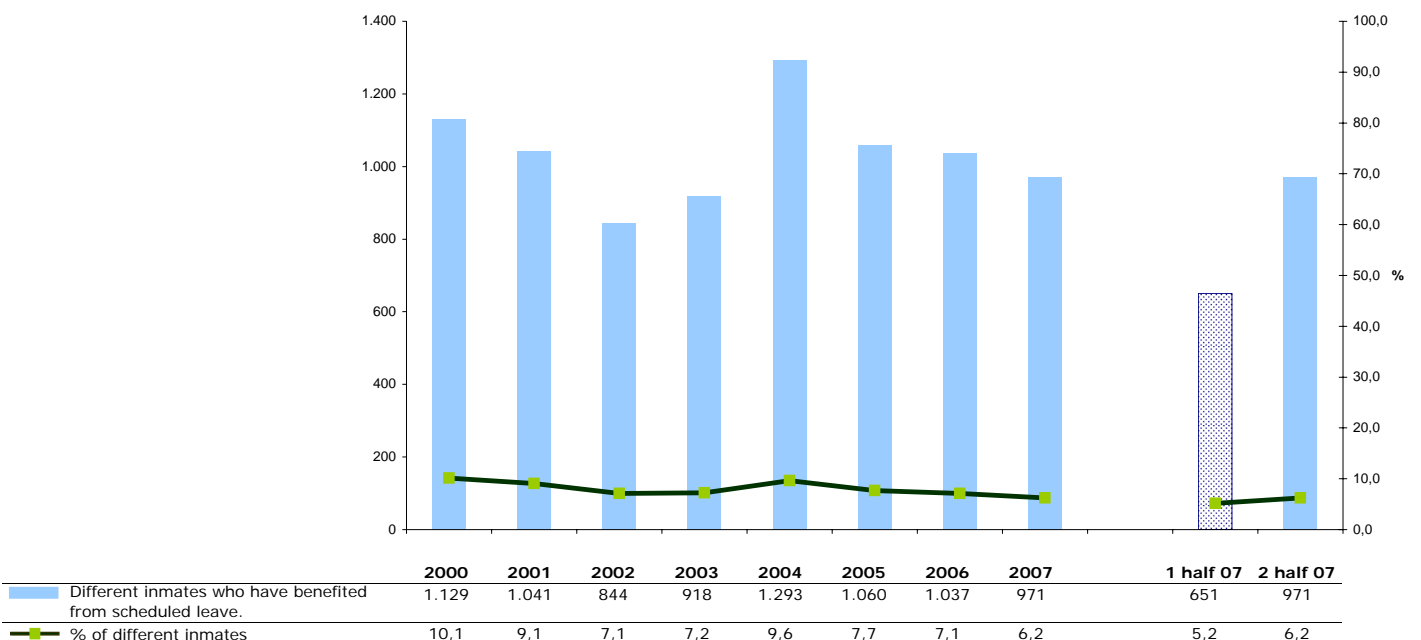
Annual mean number of inmates on work programs: workshops, occupational plans, outside services and destinations.

1.24 Inmates with specialised treatment: SAC (Sexual offences), DEVI (Violent offenses) and VIDO (Domestic violence)



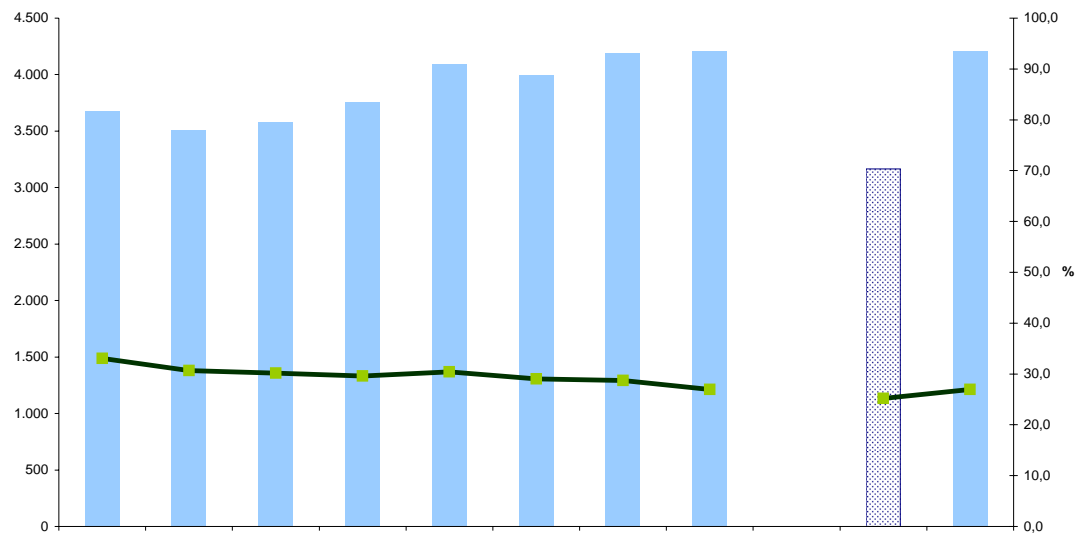
In this case the information is quarterly and reports on all inmates in the programs each quarter. SAC (Sexual offences), DEVI (Violent offences) and VIDO (Domestic violence)

1.25 Inmates who have benefited from scheduled leave



Scheduled leave is a qualitative complement of regular leave permits as they enable the inmate to have access to situations, environments and resources that are alternative to the usual surroundings and so reinforce the processes of the rehabilitation work carried out in penal centres. On these leaves the inmate is accompanied and the reason for the leave is previously planned (leave to go to the theatre, to a work hearing, participate in a activity social such as the cinema, a sports competition, ...). The data includes the number of different inmates who have benefited from this type of leave over the year and the percentage that this figure represents in relation to the total number of inmates in the penal centres each year.

1.26 Inmates who have benefited from leave

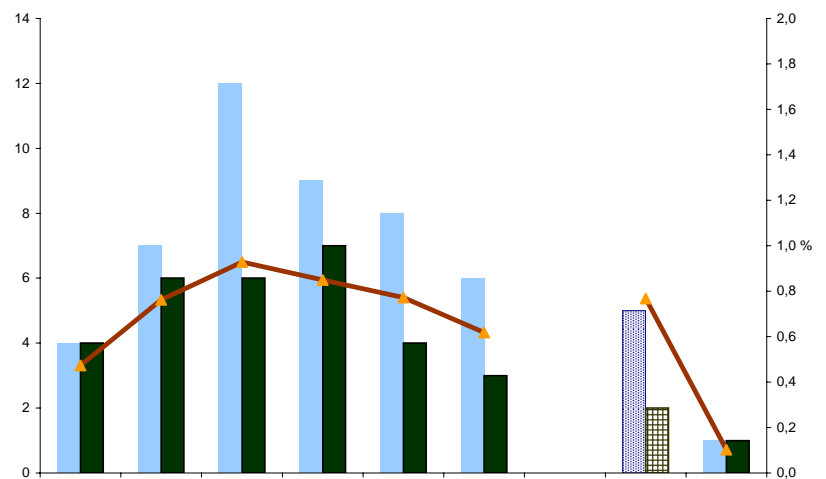


	2000	2001	2002	2003	2004	2005	2006	2007	1 half 07	2 half 07
Different inmates who have benefited from leave	3.681	3.510	3.576	3.757	4.095	3.999	4.188	4.211	3.165	4.211
% of different inmates	33,1	30,6	30,2	29,6	30,4	29	28,7	26,9	25,2	26,9

The main purpose of these leaves is to prepare the individual for a life in freedom. These leaves enable the inmate to have contact with society and promote the development of processes for social re-acceptance. There are ordinary leaves in semi-open regime (up to 36 days a year), ordinary leave in open regime (up to 48 days a year), weekend leave (only for inmates in open regime), and extraordinary leave. The inmate benefits from these leaves without being accompanied by members of the penitentiary and rehabilitation services or police (except some types of extraordinary leaves).

The data shows the total number of inmates who have benefited from these leaves and the percentage they represent of the total number of inmates who are or have been in the penal centres each year.

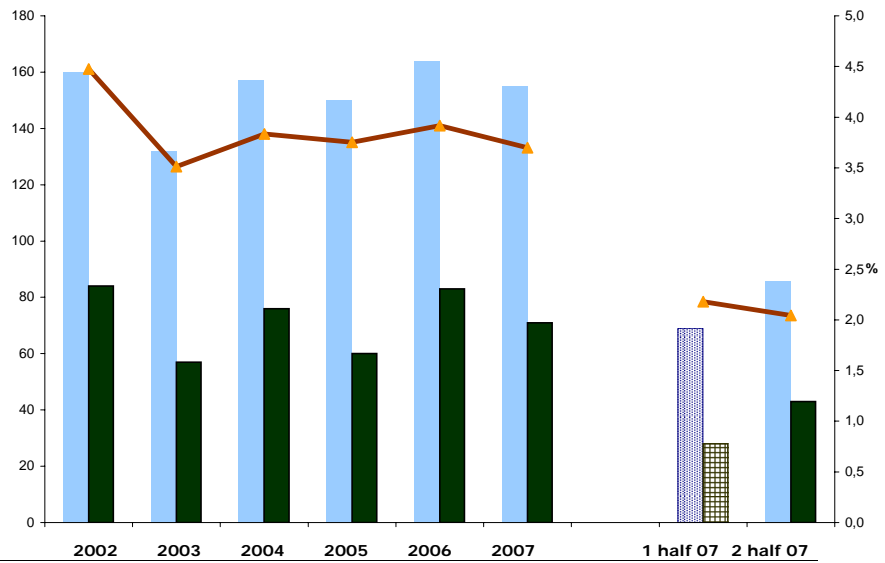
1.27 non-returns to return and recuperation from scheduled leave



	2002	2003	2004	2005	2006	2007	1 half 07	2 half 07
non-returns to return from scheduled leave	4	7	12	9	8	6	5	1
Recuperation from scheduled leave	4	6	6	7	4	3	2	1
% of non-returns to return of the total inmates benefiting	0,5	0,8	0,9	0,8	0,8	0,6	0,8	0,1
% recuperation of these non-returns	100	85,7	50	77,8	50	50	40	100

Sometimes an inmate may break the confidence placed in him and escape while benefiting from this type of leave. This section shows the number of inmates who have abused this confidence each year, the percentage this abuse represents on the total number of inmates who benefited from these leaves, the number of inmates who broke the confidence and returned to prison either voluntarily or by force, and the percentage that this number of returns represents on the total number of abuses of confidence.

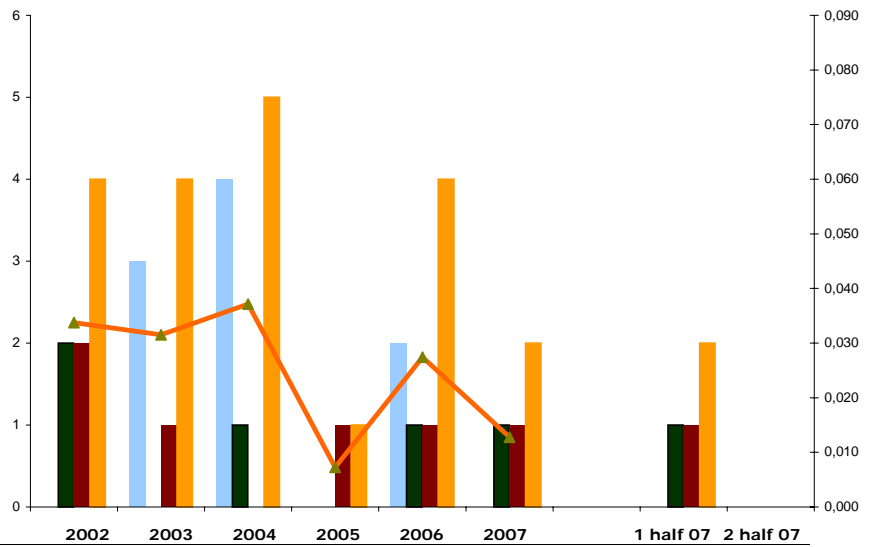
1.28 Failure to return and recuperation from leave



	2002	2003	2004	2005	2006	2007	1 half 07	2 half 07
Failure to return from leave	160	132	157	150	164	155	69	86
Recuperation from leave	84	57	76	60	83	71	28	43
% of non-returns to return of the total inmates benefiting	4,5	3,5	3,8	3,8	3,9	3,7	2,2	2,0
% recuperation of these non-returns	52,5	43,2	48,4	40,0	50,6	45,8	40,6	50,0

This break of confidence sometimes also occurs during ordinary, extraordinary and weekend leave. This section shows the number of inmates who have abused this confidence each year, the percentage this abuse represents on the total number of inmates who benefited from these leaves, the number of inmates who broke the confidence and returned to prison either voluntarily or by force, and the percentage that this number of returns represents on the total number of abuses of confidence.

1.29 Escapees



	2002	2003	2004	2005	2006	2007	1 half 07	2 half 07
Escape from an open centre/section	0	3	4	0	2	0	0	0
Escape during transfer	2	0	1	0	1	1	1	0
Escape from an ordinary centre	2	1	0	1	1	1	1	0
Total escapes	4	4	5	1	4	2	2	0
Different inmates	11.860	12.689	13.463	13.767	14.572	15.630		
% escapes of different inmates	0,034	0,032	0,037	0,007	0,027	0,013		

Escape is understood to be by evading the security systems of the penal centres. The data for each year are grouped as escapes from open centres/sections, where inmates are completing their sentence in open regime, escapes during transfer by public forces (transfer to courts, hospitals) and escapes from closed prison centres. The graph also shows the percentage of these escapes on the total number of inmates who are or have been in the penal centres each year.

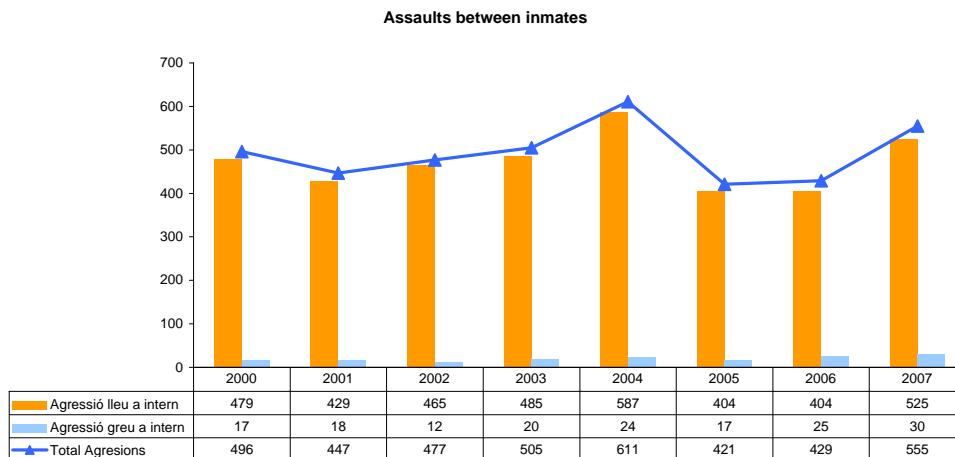
1.30 Annual evolution of assaults on prison guards



	2000	2001	2002	2003	2004	2005	2006	2007
Total assaults on prison guards	70	90	108	69	45	48	32	46
Serious assault on prison guard	5	2	6	8	2	3	0	6
Slight assault on prison guard	65	88	102	61	43	45	32	40
Different inmates	11132	11129	11452	11860	12689	13463	13767	15438
Ratio PG assault/100inmates	0,628818	0,81	0,94	0,58	0,35	0,36	0,23	0,30

Slight assaults are those resolved by minimum action on the part of penal centre healthcare services. Serious assaults are those requiring more complex treatment in an external hospital centre and which in some cases may result in leave for incapacity to work.

1.31 Annual evolution of assaults between inmates

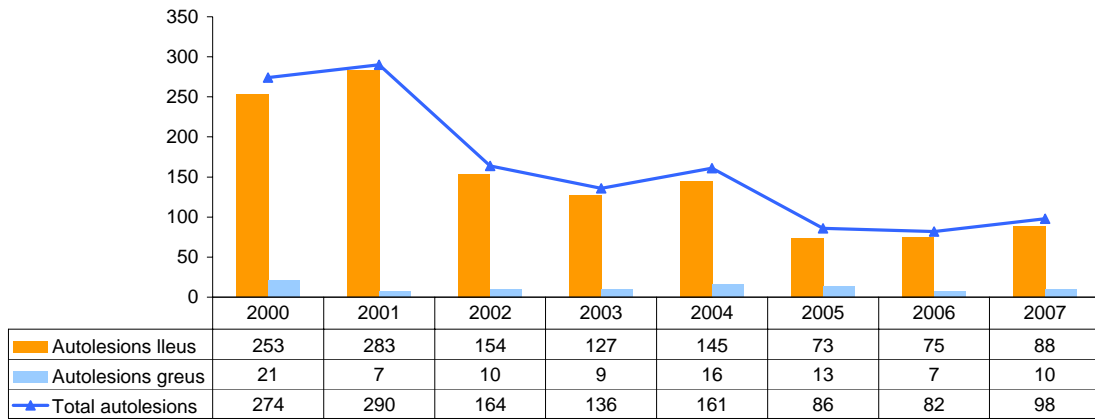


	2000	2001	2002	2003	2004	2005	2006	2007
Total assaults on inmates	496	447	477	505	611	421	429	555
Serious assault on inmate	17	18	12	20	24	17	25	30
Slight assault on inmate	479	429	465	485	587	404	404	525
Different inmates	11132	11129	11452	11860	12689	13463	13767	15438
Ratio inmate ass/100 inmates	4,455623	4,02	4,17	4,26	4,82	3,13	3,12	3,60

Slight assaults are those resolved by minimum action on the part of penal centre healthcare services. Serious assaults are those requiring more complex treatment in an external hospital centre.

1.32 Annual evolution of self-inflicted injury

Self-inflicted injuries



	2000	2001	2002	2003	2004	2005	2006	2007
Total self-inflicted injuries	274	290	164	136	161	86	82	98
Serious self-inflicted injuries	21	7	10	9	16	13	7	10
Slight self-inflicted injuries	253	283	154	127	145	73	75	88
Different inmates	11132	11129	11452	11860	12689	13463	13767	15438
Ratio self-inflicted injury/100 inm	11132	0,03	0,01	0,01	0,01	0,01	0,01	0,01

Self-inflicted injuries are the physical injuries inmates cause to themselves for different reasons.

1.33 Deaths

Annual evolution

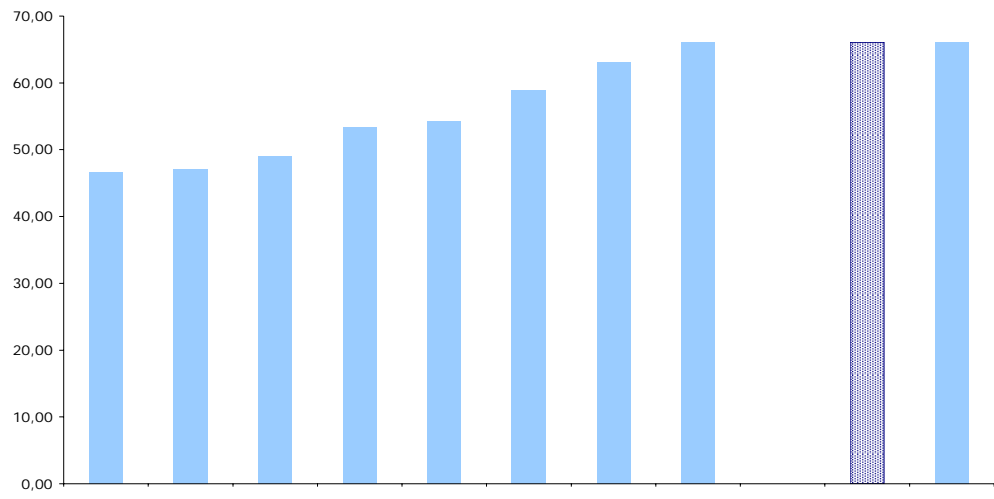
Cause	2000	2001	2002	2003	2004	2005	2006	2007	1 half 07	2 half 07
AIDS	12	15	13	9	9	9	6	7	3	7
other diseases	52	40	32	35	30	47	35	38	10	29
overdose	5	13	7	12	10	8	3	8	2	8
suicide	4	3	7	8	8	8	6	9	4	9
accident	2	1	1	1	4	1	1	4	1	4
assault	2	0	3	0	0	1	0	0	0	0
total deaths	77	72	63	65	61	74	51	66	20	66
Different inmates	11.129	11.452	11.860	12.689	13.463	13.767	14.572	15.630	12.567	15.630
% deaths of different inmates	0,692	0,629	0,531	0,512	0,453	0,538	0,350	0,422	0,159	0,422

Place	2000	2001	2002	2003	2004	2005	2006	2007	1 half 07	2 half 07
prison	17	18	10	14	21	17	15	29	10	29
hospital	27	21	30	26	11	22	16	20	5	20
social and healthcare centres	3	8	6	10	7	8	4	4	0	4
leave	9	11	6	5	5	11	4	8	5	8
family	21	8	10	6	10	16	9	5	0	5
others	0	6	1	4	7	0	3	0	0	0
total deaths	77	72	63	65	61	74	51	66	20	66

The table of deaths shows the total number of inmates who died while serving their sentence. Part of these deaths occurred while the inmate was inside penitentiary facilities and an other part while outside (hospitals, leave, parole). There is an explanation of the cause of death and the percentage this represents on the total number of inmates who are or have been in penal centres each year.

Some data may vary compared to previous reports as the final information on the annual mortality is not closed out until March of the following year.

1.34 Inmate cost per day



	2000	2001	2002	2003	2004	2005	2006	2007	1 half 07	2 half 07
Inmate cost per day	46,55	47,04	49,05	53,42	54,34	58,94	63,16	66,08	66,08	66,08
Annual cost in millions of Euros	103,57	107,95	122,18	141,50	156,28	177,94	203,32	222,45	222,45	222,45
Mean number of inmates	6.095	6.287	6.825	7.257	7.879	8.271	8.820	9.223	9.223	9.223

Source: Directorate of Services.

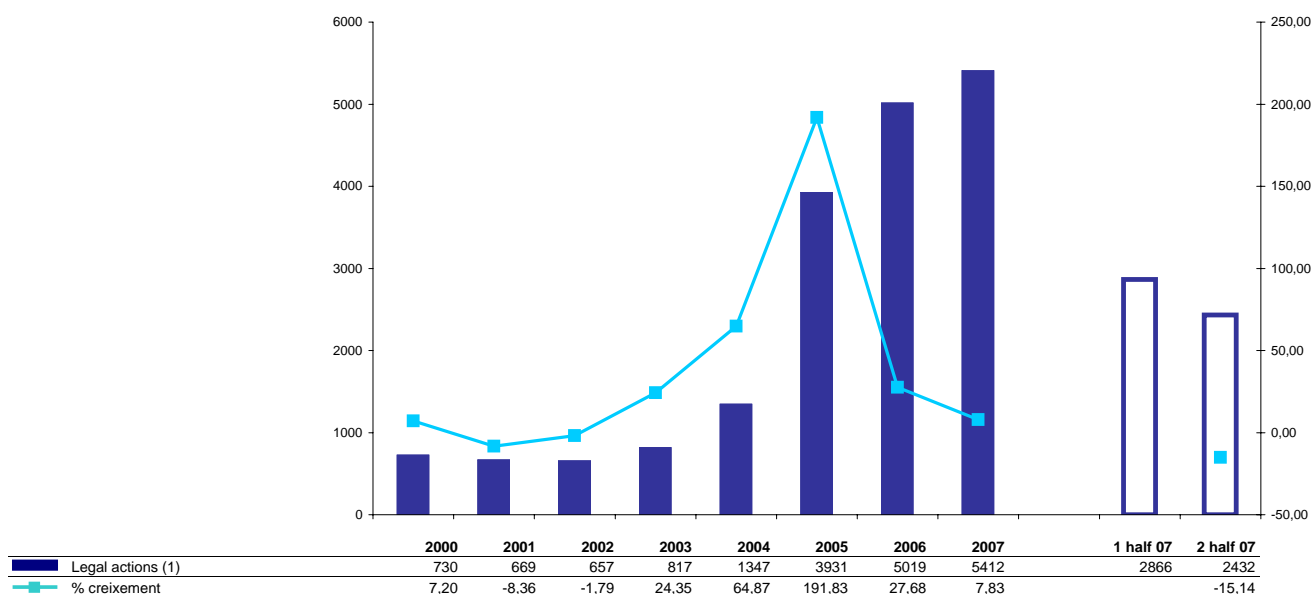
**alternative
penal measures**

basic data

December

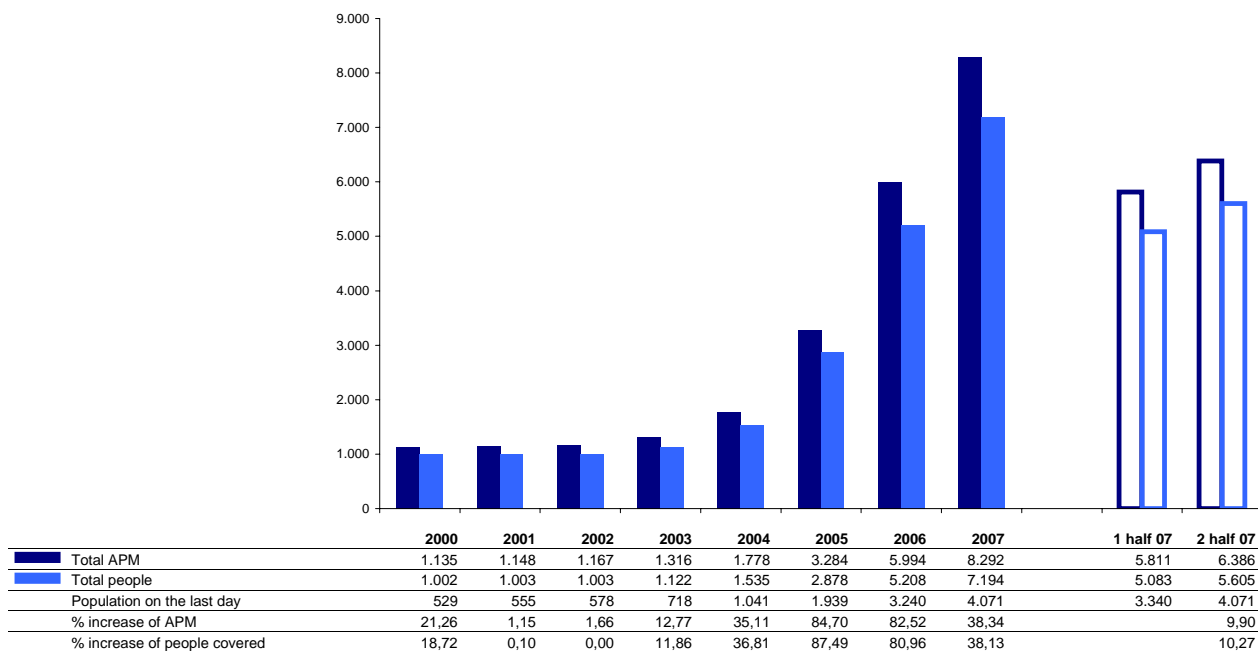
00/01/02/03/04/05/06/07

2.1. Alternative penal measures: accumulated annual legal actions



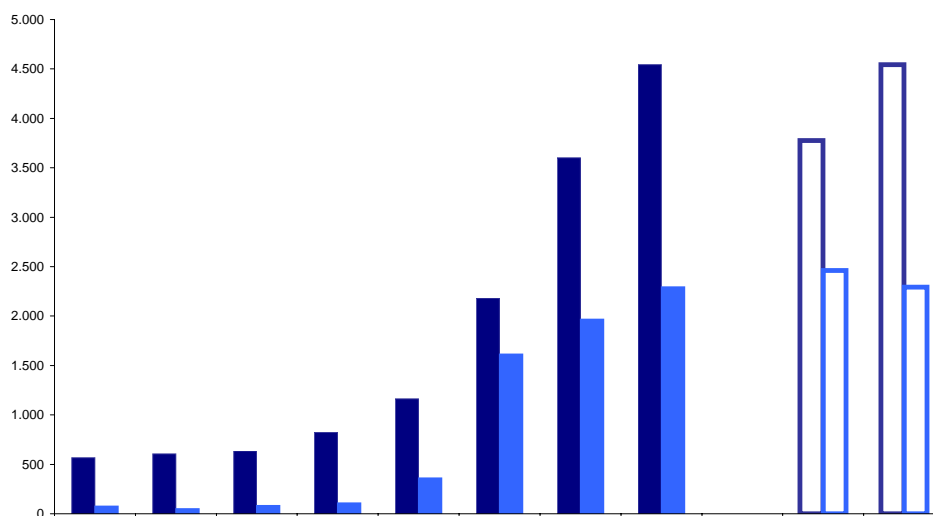
This is the total number of legal actions instigated during the period by the penal jurisdiction authority for the application of alternative measures to the prison. The legal actions do not refer to different people. The same person may be required to comply with one or more alternative measures to prison. The graph also shows the annual growth of legal actions compared to the same period of the previous year.

2.2. Total number of different measures and people



Data on the alternative measures instigated or still being carried out, the number of different people subject to these measures and the percentage growth of measures instigated or being implemented as well as the number of people they are applied to compared to the previous year.

2.3. Alternative measures penal pending implementation



	2000	2001	2002	2003	2004	2005	2006	2007	1 half 07	2 half 07
APM pending initiation on the last day	75	47	80	107	360	1,614	1,965	2,292	2,461	2,292
APM implemented on the last day	568	605	635	821	1,162	2,178	3,601	4,544	3,776	4,544
% APM pending initiation	11,66%	7,21%	11,19%	11,53%	23,65%	42,56%	35,30%	33,53%	39,46%	33,53%
% APM implemented	88,34%	92,79%	88,81%	88,47%	76,35%	57,44%	64,70%	66,47%	60,54%	66,47%

This refers to the measures that have not yet been implemented and the percentage this represents of the total number of measures being followed-up. Non-implementation of the measure may be due to the lack of localisation or the temporary lack of availability of a suitable resource.

2.4. Average annual number of alternative penal measures in follow-up

Previous Penal Code	2007	
	MAPM	%MAPM
Disintoxication outpatient therapeutic treatment	1	0,03%
Adm. psychiatric centre	1	0,03%
Probation	1	0,03%
Cond. sentence	0	0,00%
Mental Health outpatient therapeutic treatment	0	0,00%
Adm. disintoxication centre	0	0,00%
Mean previous Penal Code	3	0,08%
Duties and Work in the benefit of the community	MAPM	%MAPM
Work in benefit of the community	1658	44,5%
Obl. participation in training programs	740	19,9%
Obl. Disintoxication outpatient therapeutic treatment	519	13,9%
Obl. appearance before the administration	250	6,7%
Obl. compliance with duties	50	1,3%
Obl. Adm. disintoxication	11	0,3%
Mean duties and WBC	3228	86,6%
Security measures without loss of freedom	MAPM	%MAPM
M Mental Health outpatient therapeutic treatment	184	4,94%
M disintoxication outpatient therapeutic treatment	76	2,04%
M attendance training prg.	12	0,33%
M of family custody	7	0,19%
Mean MNLF	279	7,5%
Security measures with loss of freedom	MAPM	%MAPM
Sec. M. adm. psychiatric centre	153	4,10%
Sec. M. adm. disintoxication centre	60	1,61%
Sec. M. adm. special educ. centre	5	0,12%
Mean MLF	218	5,84%
Mean new Penal Code	3725	99,92%
Annual average APM	3728	
		%
Previous Penal Code	0,08%	
New Penal Code	99,92%	
<i>Duties and Work in the benefit of the community</i>		86,58%
<i>Security measures without loss of freedom</i>		7,49%
<i>Security measures with loss of freedom</i>		5,84%

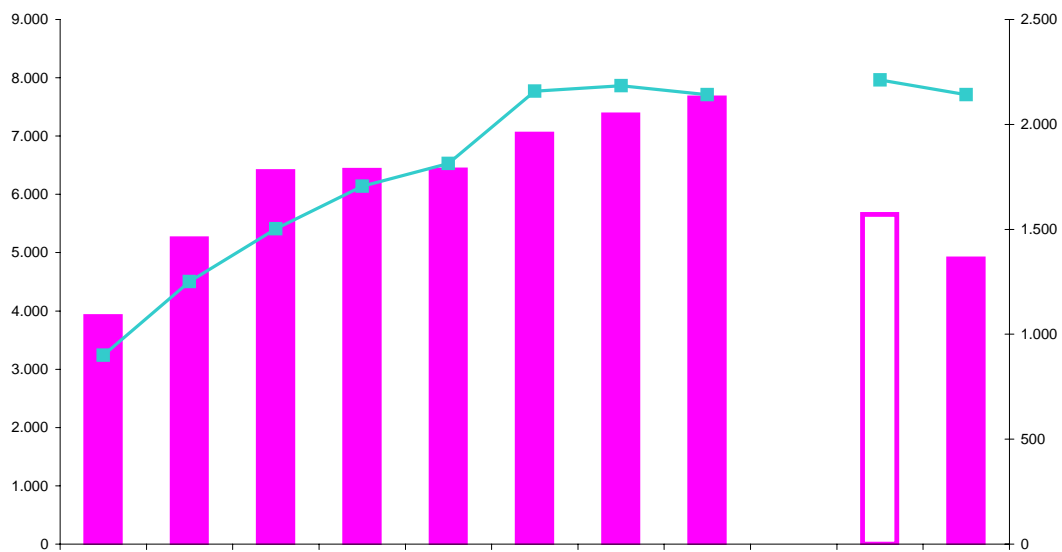
juvenile justice

basic data

December

00/01/02/03/04/05/06/07

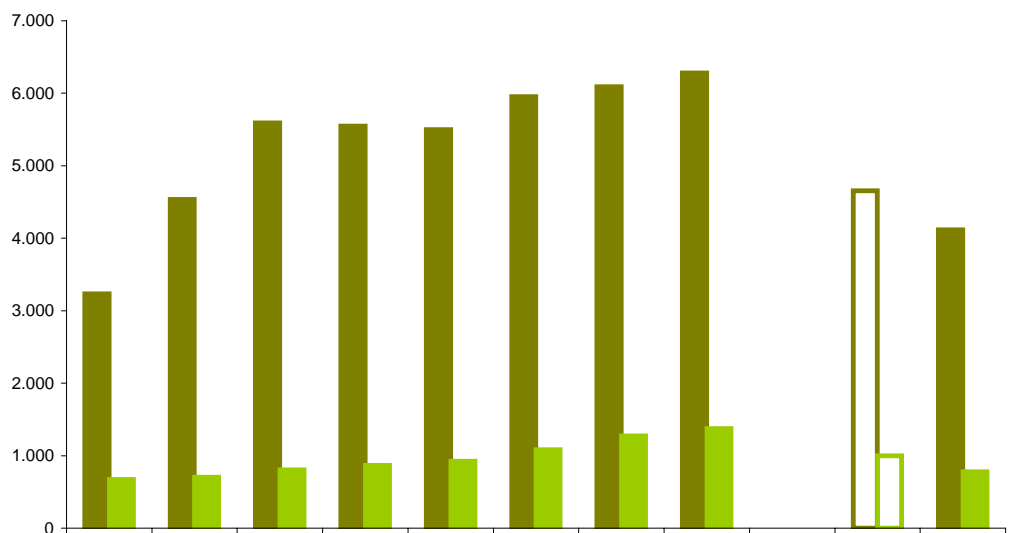
3.1 Juvenile justice population



	2000	2001	2002	2003	2004	2005	2006	2007	1 half 07	2 half 07
Total population	3.903	5.236	6.394	6.412	6.419	7.036	7.363	7.654	5.655	4.894
Population on the last day	900	1.251	1.503	1.705	1.814	2.159	2.184	2.141	2.211	2.141
% growth total population	7,88	34,15	22,12	0,28	0,11	9,61	4,65	3,95		-13,46
% population growth on the last day	11,52	39,00	20,14	13,44	6,39	19,02	1,16	-1,97		-3,17

Two types of data are presented: the number of minors that were under the care of juvenile justice services, in any of the different programs (interned in a centre, open system, technical mediation advice) on the last day of the year, as well as the total number of minors attended to during the period.

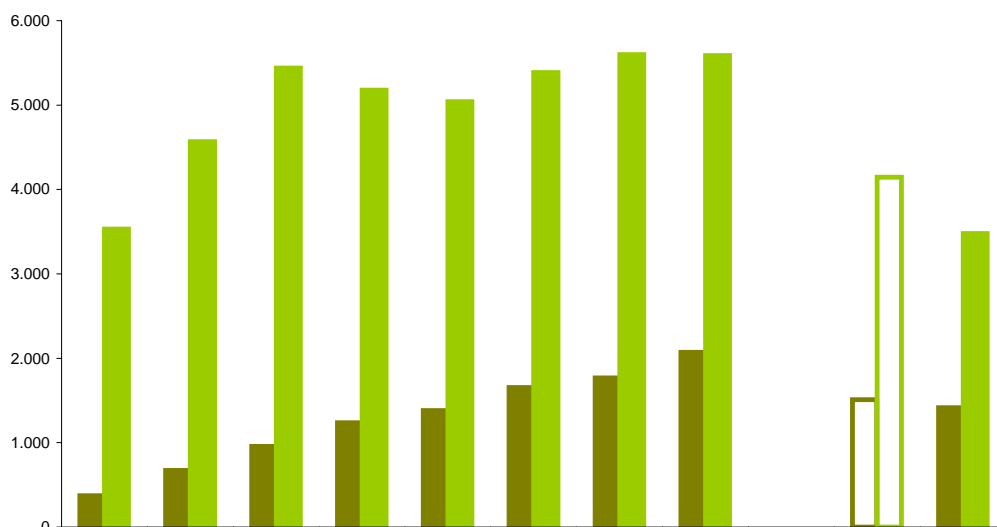
3.2 Population according to sex



	2000	2001	2002	2003	2004	2005	2006	2007	1 half 07	2 half 07
Men	3.231	4.534	5.590	5.545	5.497	5.955	6.091	6.280	4.655	4.116
Women	672	702	804	867	922	1.081	1.272	1.374	1.000	778
% Men	82,78%	86,59%	87,43%	86,48%	85,64%	84,64%	82,72%	82,05%	82,32%	84,10%
% Women	17,22%	13,41%	12,57%	13,52%	14,36%	15,36%	17,28%	17,95%	17,68%	15,90%

Specifies the number of boys and girls attended to and the percentage this represents on the total number subjected to a program or measure of the minors jurisdiction for each year.

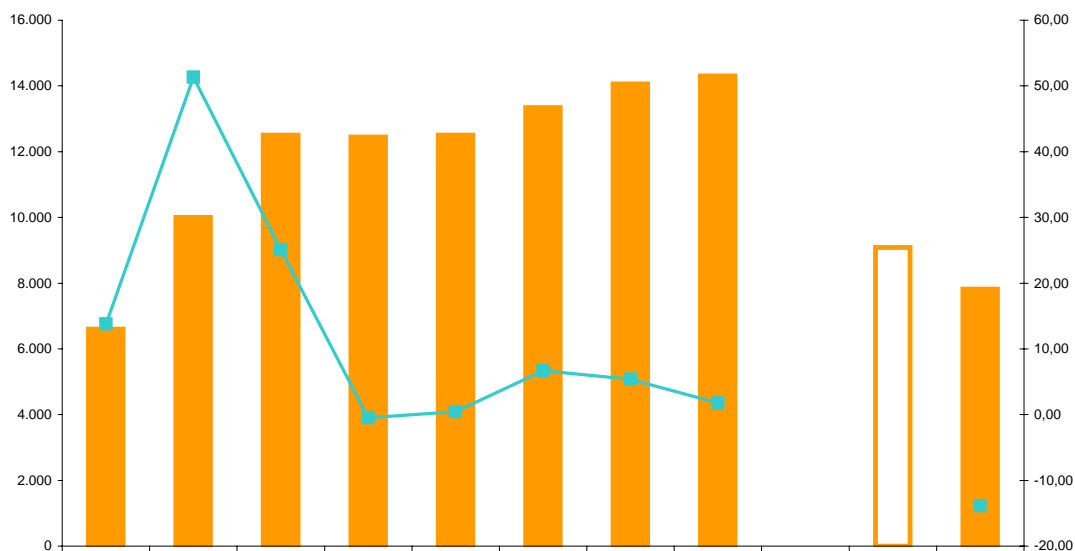
3.3 Population according to nationality



	2000	2001	2002	2003	2004	2005	2006	2007	1 half 07	2 half 07
Population of foreigners	373	670	954	1.235	1.380	1.652	1.766	2.069	1.511	1.416
Population of Spanish nationals	3.530	4.566	5.440	5.177	5.039	5.384	5.597	5.585	4.144	3.478
% Foreigners	9,56%	12,80%	14,92%	19,26%	21,50%	23,48%	23,98%	27,03%	26,72%	28,93%
% Spanish nationals	90,44%	87,20%	85,08%	80,74%	78,50%	76,52%	76,02%	72,97%	73,28%	71,07%

Specifies the number of Spanish nationals and foreigners and the percentage this represents on the total number of minors under the care of juvenile justice.

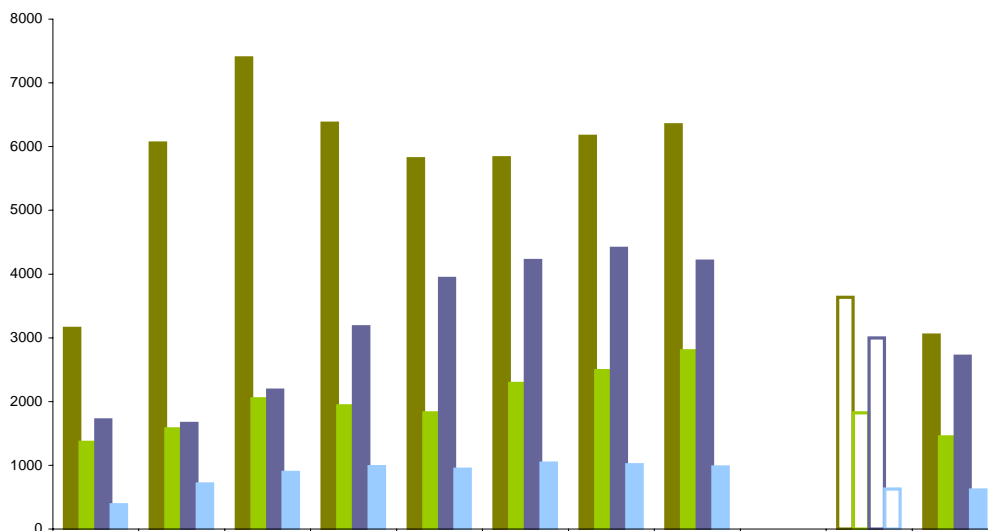
3.4 Number of orders and measures



	2000	2001	2002	2003	2004	2005	2006	2007	1 half 07	2 half 07
Total orders and measures	6.605	9.997	12.507	12.449	12.507	13.343	14.059	14.310	9.081	7.821
growth %	13,78	51,36	25,11	-0,46	0,47	6,68	5,37	1,79		-13,88

Data on the total number of orders and measures of the jurisdiction for minors executed or in execution each year: the total corresponds to orders for technical advice and mediation, and measures of open system and internment.

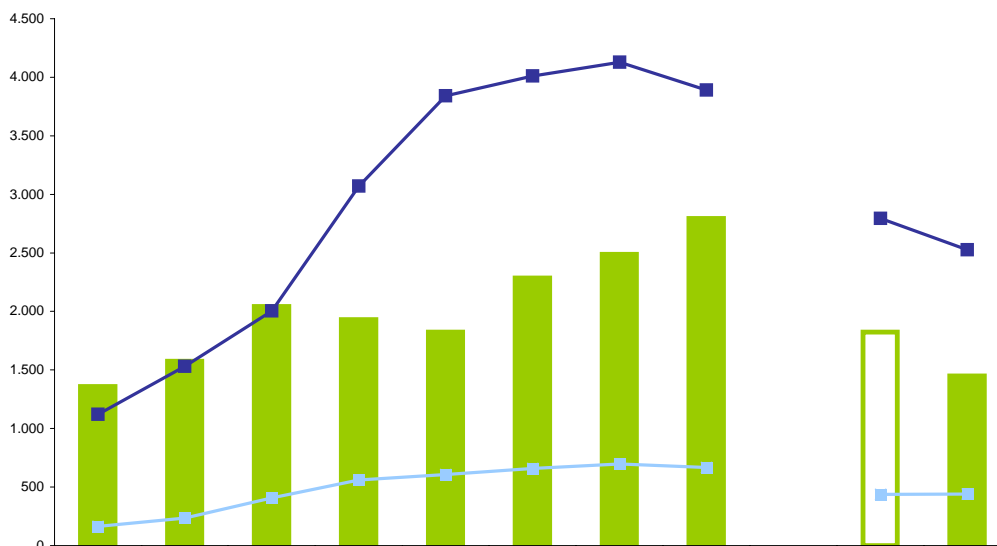
3.5 Distribution of orders and measures according to the type of program



	2000	2001	2002	2003	2004	2005	2006	2007	1 half 07	2 half 07
Technical advice	3150	6055	7394	6367	5812	5825	6161	6342	3634	3045
Mediation	1359	1574	2042	1931	1824	2285	2487	2795	1823	1448
Open system	1713	1658	2182	3172	3931	4213	4404	4201	2998	2713
Internment in EC	383	710	889	979	940	1036	1007	972	626	615
% Technical advice	47,69%	60,57%	59,12%	51,14%	46,47%	43,66%	43,82%	44,32%	40,02%	38,93%
% Mediation	20,58%	15,74%	16,33%	15,51%	14,58%	17,13%	17,69%	19,53%	20,07%	18,51%
% Open system	25,93%	16,58%	17,45%	25,48%	31,43%	31,57%	31,33%	29,36%	33,01%	34,69%
% Internment in EC	5,80%	7,10%	7,11%	7,86%	7,52%	7,76%	7,16%	6,79%	6,89%	7,86%

The graph shows the total number of orders and measures executed for each year, grouped by technical advice, mediation, open system and internment in an educational centre and the percentage of each program in relation to the total. The total number of orders and measures is never equal to the number of different minors as the same minor may in some cases be in more than one type of program.

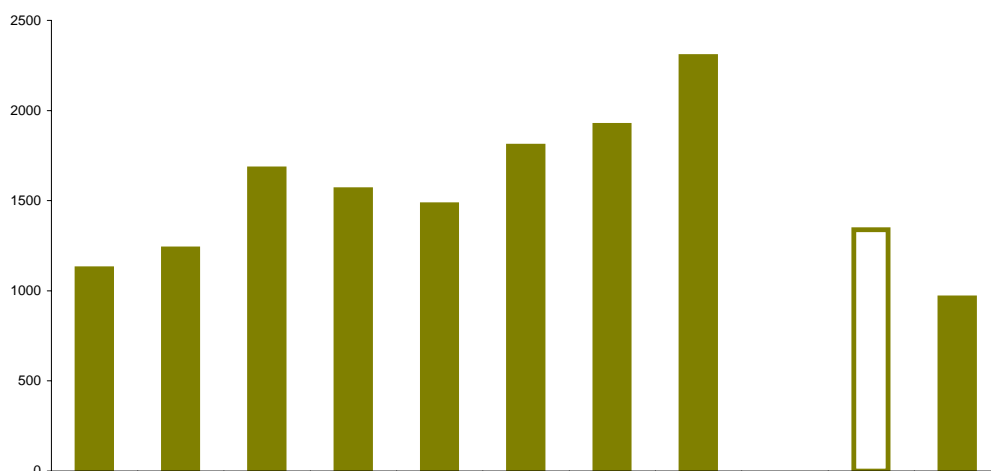
3.6 Mediation programs



	2000	2001	2002	2003	2004	2005	2006	2007	1 half 07	2 half 07
Mediation programs	1.359	1.574	2.042	1.931	1.824	2.285	2.487	2.795	1.823	1.448
Firm open system measures	1.120	1.532	2.004	3.070	3.840	4.011	4.128	3.889	2.794	2.527
Firm EC measures	165	234	408	561	608	660	698	668	438	440
% Mediation	51%	47%	46%	35%	29%	33%	34%	38%	36%	33%
% Open system	42%	46%	45%	55%	61%	58%	56%	53%	55%	57%
% Internment in EC	6%	7%	9%	10%	10%	9%	10%	9%	9%	10%

The graph shows the total data on the mediation programs and compares it to the total number of measures of open system and exclusive definite internment precautionary measures adopted by jurisdictional bodies for minors. The graph shows the percentage distribution.

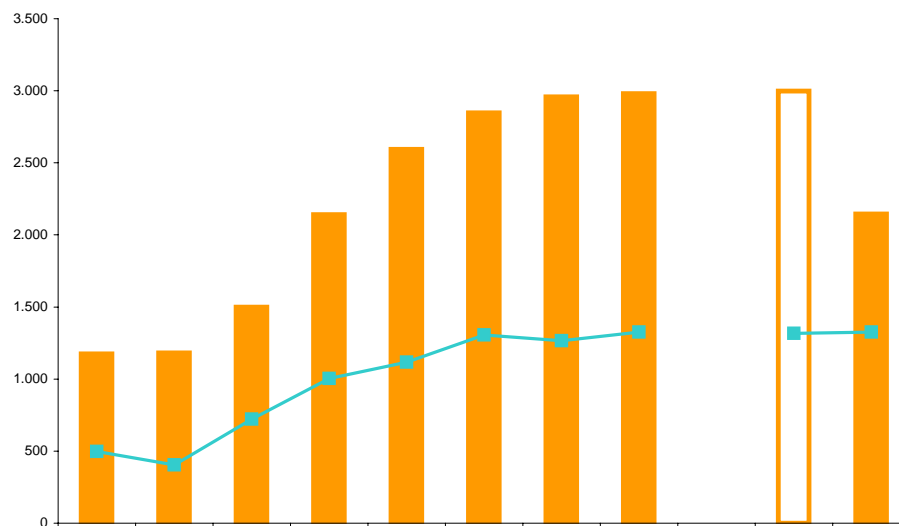
3.7 Mediation programs completed and results of the mediation



	2000	2001	2002	2003	2004	2005	2006	2007	1 half 07	2 half 07
Mediations completed	1122	1232	1676	1560	1478	1802	1917	2299	1.338	961
% positive report result	82,83%	84,68%	86,02%	85,68%	82,22%	80,40%	82,96%	85,66%	84,84%	86,21%
% negative report result	17,17%	15,32%	13,98%	14,32%	17,78%	19,60%	17,04%	14,34%	15,16%	13,79%

The graph specifies the number of mediations completed and their results: if they have been positive (with agreement between the parts and educational effects) or negative (without agreement or educational effects).

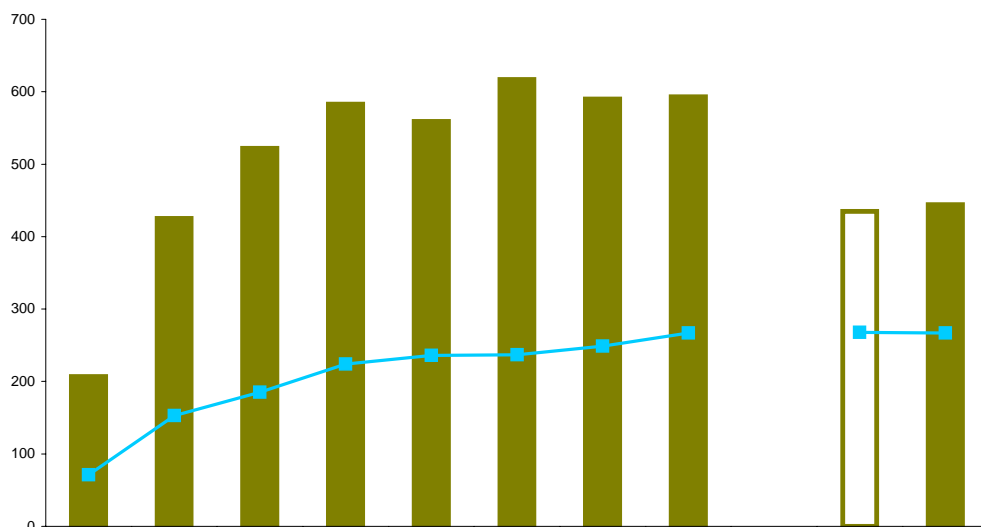
3.8 Population in open system



	2000	2001	2002	2003	2004	2005	2006	2007	1 half 07	2 half 07
Total population	1.174	1.181	1.500	2.141	2.595	2.848	2.959	2.981	2.998	2.146
Population on the last day	498	405	721	1.004	1.116	1.305	1.266	1.326	1.318	1.326
% growth total population	35,25	0,60	27,01	42,73	21,21	9,75	3,90	0,74		-28,42
% population growth on the last day	53,23	-18,67	78,02	39,25	11,16	16,94	-2,99	4,74		0,61

Data on the number of minors that were in the open system on the last day as well as the total number of different minors during the period.

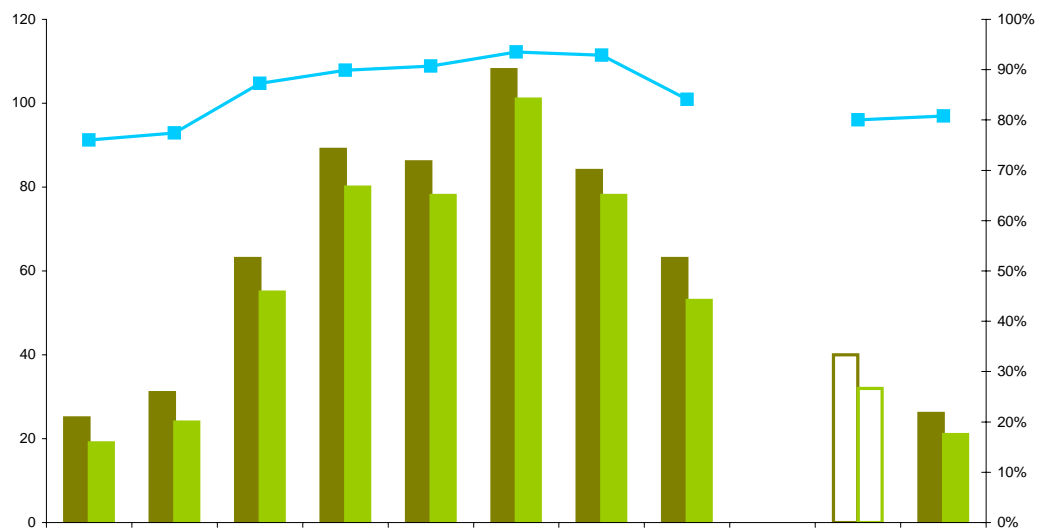
3.9 Population interned in educational centres



	2000	2001	2002	2003	2004	2005	2006	2007	1 half 07	2 half 07
Total population	207	425	522	583	559	617	590	593	435	444
Population on the last day	71	153	185	224	236	237	249	267	268	267
% growth total population	35,29	105,31	22,82	11,69	-4,12	10,38	-4,38	0,51		2,07
% population growth on the last day	0,00	115,49	20,92	21,08	5,36	0,42	5,06	7,23		-0,37

Data on the number of minors interned in an educational centre on the last day of the six-month period as well as the accumulated total number of different minors during the period.

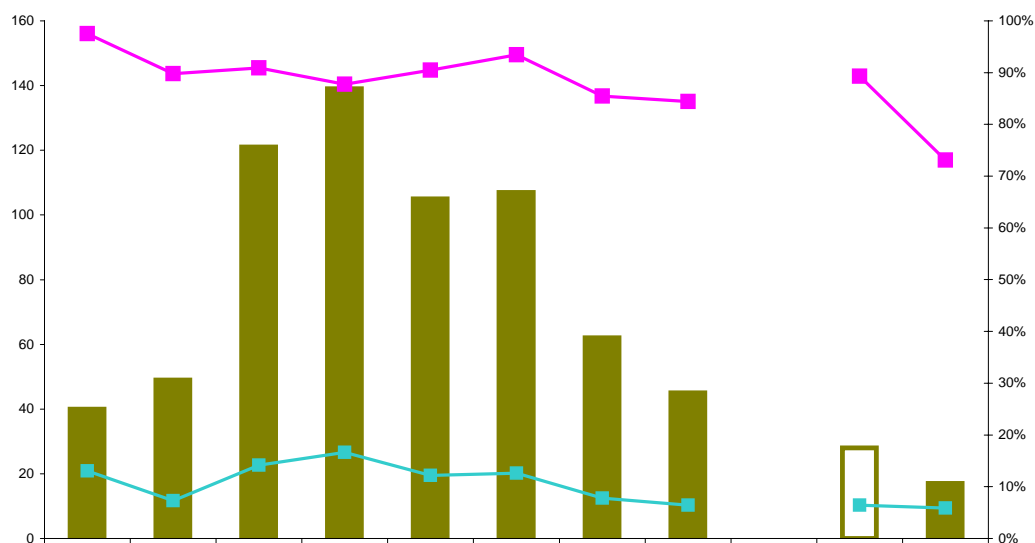
3.10 Failure to return and recuperations from controlled outings, weekend and extraordinary leaves



	2000	2001	2002	2003	2004	2005	2006	2007	1 half 07	2 half 07
Different people with non-return	25	31	63	89	86	108	84	63	40	26
People recuperated	19	24	55	80	78	101	78	53	32	21
% recuperation of these non-returns	76,00%	77,42%	87,30%	89,89%	90,70%	93,52%	92,86%	84,13%	80,00%	80,77%

This graph shows the total number of different minors that did not return after benefiting from leave and of these, the number that returned voluntarily or by the public forces. It also makes reference to the percentage of recuperations of the total number of non-returns.

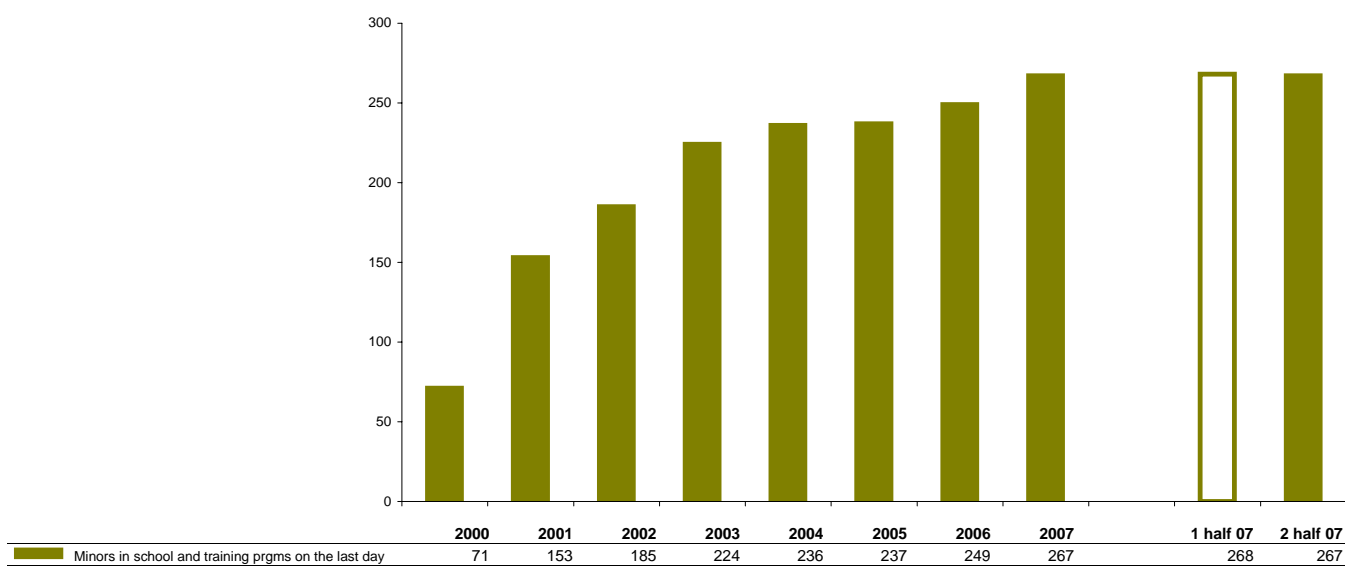
3.11 Escapes, evasions and recuperations



	2000	2001	2002	2003	2004	2005	2006	2007	1 half 07	2 half 07
Total escapes and evasions	40	49	121	139	105	107	62	45	28	17
% of internees	13,04%	7,29%	14,18%	16,64%	12,16%	12,64%	7,80%	6,41%	6,44%	5,86%
% recuperations	97,50%	89,80%	90,91%	87,77%	90,48%	93,46%	85,48%	84,44%	89,29%	73,08%
People with E/E	27	31	74	97	68	78	46	38	26	26
Pending on the last day	1	5	11	17	10	7	9	7	3	7
Escapes	***	***	5	8	6	18	3	2	0	2
Evasions from open centre	***	***	***	131	10	5	4	4	2	2
Evasions accompanied outing	***	***	***		89	84	55	39	26	13

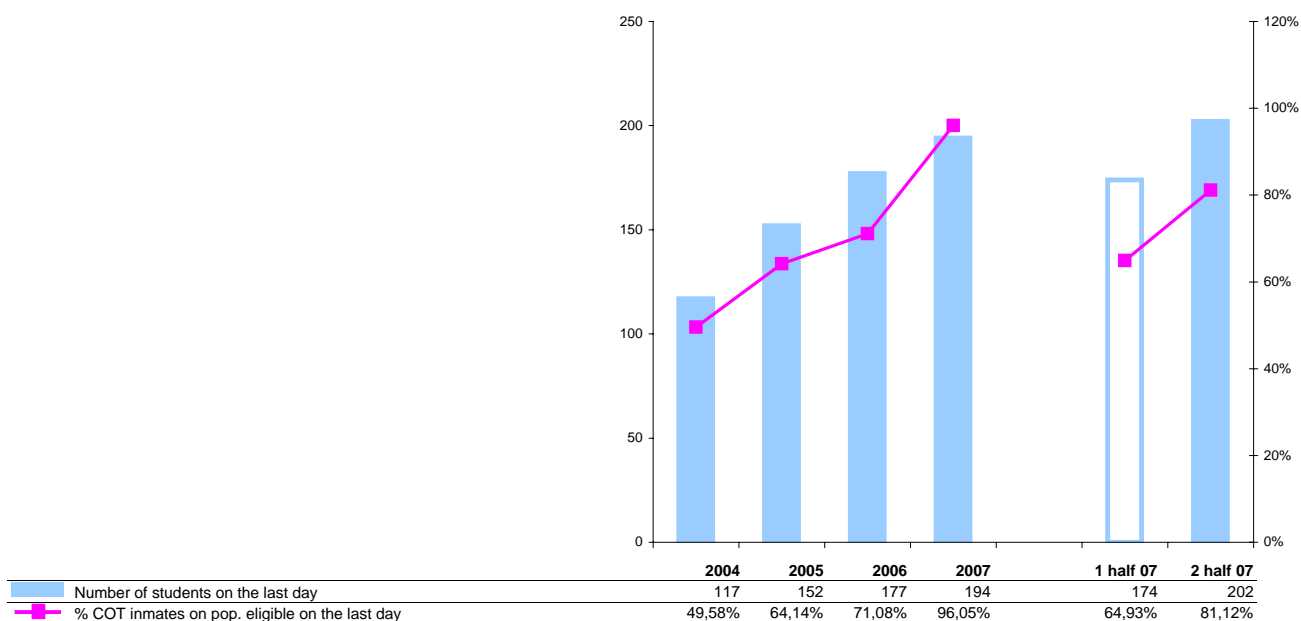
The graph shows the number of escapes and evasions per year. Escapes refer to failure to return to ordinary centres, and evasions to failure to return to open centres or from scheduled outings. The data is presented as follows: total escapes and evasions for each year, minors involved (the same minor may have escaped various times, specially since the execution of measures of internment in open centres), percentage these escapes and evasions represent of the total number of internees, pending recuperation on the last day of each year, percentage of recuperations in relation to the total number of escapes and evasions, number of evasions from open centres, number of evasions from scheduled outings and number of escapes.

3.12 Training: School programs



The graph shows the number of students enrolled in a school program on the last day of the period: Secondary Education, adult training, access to educational cycles, college by correspondence, initiation into intermediate degree educational cycles and Spanish for foreigners. All the minors interned in centres for minors are educated.

3.13 Career and occupational training



The graph shows the number of enrolments in career and occupational training courses for minors and youths who comply with the conditions required for this type of training.